

EAST REGION 1st Quarter Anniversaries

	<u>Years of Service</u>
Joseph Beauchamp	10
Eugene Klosowski	9
Nancy Oakes	5
Larry Phelps	5
William Phelps	5

WEST REGION 1st Quarter Anniversaries

	<u>Years of Service</u>
Brian Conn	28
William R. McMillen	25
Carl G. Freeman	24
Craig R. Grottness	23
Quint E. Kurtz	20
Adolfo M. Gonzalez	20
Quint E. Kurtz	20
Bobby L. Adams	18
Diego Gallegos	18
Humberto R. Gonzalez	17
Carlos R. Miramontes	16
Kevin Emerson	16
Gerardo R. Rivera	15
Manuel H. Ballesteros Anaya	14
Pedro S. Ramos	14
German G. Gutierrez	14
Jesus J. Ballesteros	12
Ronald F. Hyer Jr.	12
Juan M. Gonzalez	12
Rodolfo R. Beltran	10
Francisco J. Cisneros	7
Andres Monge	6
Oracio Enciso Serrano	6
Randy Croghan	6
James S. Aguilar	5
Felipe M. Cruz	5
Daniel A. Galvez	5
Carlos A. Trejo	5
Jesus J. Chavez	5

THANK YOU FOR YOUR SERVICE!

Colorado | Denver—Ft. Collins—Colorado Springs
 Delaware | Georgetown—New Castle

"Spacecon's success is based on the commitment of valuable employees like all of you. Thank you for your hard work and sincere service."

- Robert Yelinski, Spacecon Region President.

Spacecon Delivers From West to East

Welcome to the Spacecon newsletter!

From the Mile High Region to the First State, Spacecon delivers quality services from our West locations to our East locations.

We hope this newsletter will serve as a resource for our employees and highlight the important work that our employees do on a day-to-day basis.

Spacecon has experienced growth and change over the past few years: 2017 is no different. "Our focus this year will be to build on our core strengths; our drywall, metal stud framing and acoustical ceiling services," said Robert Yelinski, Spacecon Region President.



From left to right: Michael Lastowski, Founder of Prescient, John Vanker, Founder of Prescient, Robert Yelinski, President of Spacecon, Kurt Keintz, Senior Superintendent of Prescient, and Kevin Emerson, Field Operations Manager, Spacecon, at the November Excellence In Construction Award Ceremony. Spacecon was recognized for our work at the MorningStar at RidgeGate, a Prescient Project.

INSIDE THIS ISSUE:

East Highlights	2
Employee Referral Program	2
Safety Highlights	2
West Highlights	3
Quality Assurance	3
Our People	3
Employee Service Awards	4

Spacecon Receives ABC Awards

Spacecon has recently received Excellence In Construction (EIC) awards from the Associated Builders and Contractors (ABC) Rocky Mountain Chapter and Delaware Chapter. A special thank you to all who contributed to these projects!

Tom Dilley, East Vice President, (left) served as ABC Delaware Chairman for 2016. Robert Yelinski, (middle) President of Spacecon joined Project Manager, Jake Scarberry, at the November Excellence In Construction Award Ceremony. Spacecon was recognized for our work at Wilmington Hospital, a part of the Christiana Care Health System.



Spacecon East Highlights

Current Project Highlights

We have been extremely busy bidding projects on the East coast. The Bayhealth Health Campus, our largest project to date, is gaining momentum this spring. The Bayside Recreation Center in the south and our projects at DuPont in the north are also important jobs currently underway.



DuPont, Wilmington, DE



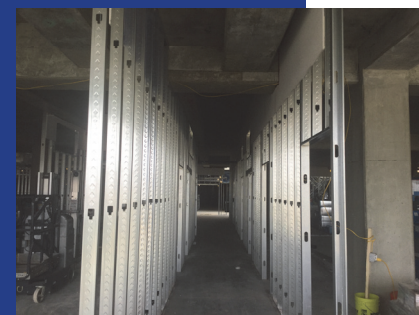
Bayside Recreation Center, Selbyville, DE



Bayhealth Health Campus, Milford, DE

Employee Referral Program Reminder!

Our employees are our best source for new hires. The Employee Referral Program has been successful in growing our workforce over the past few years. *Please call Belinda Seale at 303-430-7333 or Linda Crumley at 302-322-9285 for more information.*



Bayhealth Health Campus

Safety Highlights

“Chance takers are accident makers!” stated Kevin Dalecki, Spacecon’s Senior Safety Health & Environmental Manager. It has been a busy season for Safety on the East Coast.

Safety Training Highlights this quarter included:

- ◆ Aerial lift training
- ◆ Driver training
- ◆ Hilti training
- ◆ Signal/Rigger training
- ◆ OSHA 10 & 30 Hour Courses

Spacecon West Highlights

Current Project Highlights

“The new Center for the Visual and Performing Arts at the University of Colorado at Colorado Springs is an exciting project for us,” said Scott Mansfield, Operations Manager. “The new Center will include teaching and performing spaces, theatre’s and recital venues. Architectural features and state-of -the-art acoustical enhancements will make this an extraordinary destination for aspiring students.”



Exterior Framing for the Center



Exterior Framing for the Center



Uniquely designed angled walls for the Center

Quality Control and Quality Assurance

Important to every project from start to finish

Quality Control is vital to Spacecon’s overall success on any given project. “We take Quality Control very serious at Spacecon.” explained Reuben (TJ) Trujillo, Quality Control Manager. “We assist in verifying and ensure that all materials and construction are in accordance with the most current plans and specifications from our clients.

We then examine our projects thoroughly for accuracy and constructability to all applicable building codes and the American Disabilities Act (ADA).” TJ often refers to a quote by John Wooden to the foremen and work force, “If you don’t have time to do it right, when will you have time to do it over?”

Our People—Celebrating 30 Years

Congratulations to Craig Kelly from the West, Joseph Arcidiacono (BJ) and Tom Dilley from the East in celebrating 30 years of service with Spacecon. “Craig is one of the pillars of our workforce. He always offers his assistance whenever it is needed,” said Kevin Emerson, Field Operations Manager for the West. “BJ has been a very dedicated and hard working employee at Spacecon,” stated Donovan Wierzbicki, Field Operations Manager for the East.



Craig Kelly



Joseph Arcidiacono (BJ)