

RANK 2015	RANK 2014	FIRM	FIRM TYPE	2014 REVENUE (\$ MIL)		MARKETS (% OF 2014 REVENUE)									
				TOTAL REVENUE	NEW CONTRACTS	GENERAL BUILDING	MANUFACTURING	POWER	WATER SUPPLY	SEWER / WASTE	INDUS. / PETROLEUM	TRANSPORTATION	HAZARDOUS WASTE	TELECOM	
1	1	QUANTA SERVICES INC., Houston, Texas	E/U	7,747.2	5,219.7	0	0	68	0	0	32	0	0	0	
2	2	EMCOR GROUP INC., Norwalk, Conn.	M/E	6,425.0	NA	54	19	5	0	5	0	9	0	0	
3	3	MASTEC INC., Coral Gables, Fla. <sup>3</sup>	O/U	4,611.8	4,346.1	0	0	26	0	0	33	0	0	41	
4	4	BRAND ENERGY & INFRASTRUCTURE SERVICES INC., Kennesaw, Ga. <sup>4</sup>	O/C	3,127.7	NA	23	3	18	0	0	53	1	0	0	
5	6	THE BROCK GROUP, Houston, Texas <sup>5</sup>	O	1,450.0	NA	0	0	8	0	0	92	0	0	0	
6	9	SAFWAY GROUP - MOBLEY, Waukesha, Wis. <sup>6</sup>	O	1,313.4	NA	32	0	15	0	0	53	0	0	0	
7	8	COMFORT SYSTEMS USA INC., Houston, Texas	M	1,156.9	1,311.1	76	24	0	0	0	0	0	0	0	
8	10	MDU CONSTRUCTION SERVICES GROUP INC., Bismarck, N.D.	E/U	1,119.5	965.7	53	0	26	0	0	10	0	0	0	
9	7	HENKELS & MCCOY INC., Blue Bell, Pa. <sup>9</sup>	U	1,109.1	983.5	4	0	49	2	0	25	0	0	15	
10	15	ROSENDIN ELECTRIC, San Jose, Calif.	E	1,026.6	1,298.0	51	10	15	1	1	1	15	0	6	
11	12	PERFORMANCE CONTRACTING GROUP INC, Lenexa, Kan. <sup>11</sup>	W/O	984.6	1,102.8	46	22	13	0	1	6	4	0	0	
12	13	MYR GROUP INC., Henderson, Ill.	E	944.0	433.6	20	0	0	0	0	0	3	0	2	
13	11	MMR GROUP, Baton Rouge, La.	E	816.0	725.0	0	10	15	0	0	70	0	0	5	
14	19	CUPERTINO ELECTRIC, San Jose, Calif.	E	769.6	NA	70	0	25	0	0	0	5	0	0	
15	**	TEAM INDUSTRIAL SERVICES INC., Alvin, Texas <sup>15</sup>	O/M	749.5	NA	0	0	25	0	0	75	0	0	0	
16	14	BAKER CONCRETE CONSTRUCTION INC., Monroe, Ohio	C	725.0	675.0	61	28	6	0	1	0	4	0	0	
17	17	ACCO ENGINEERED SYSTEMS, Glendale, Calif.	M	720.0	674.1	100	0	0	0	0	0	0	0	0	
18	18	M.C. DEAN INC., Dulles, Va.	E	620.2	418.0	40	5	0	0	5	0	30	0	20	
19	20	NORTHSTAR GROUP SERVICES INC., New York, N.Y. <sup>19</sup>	D/A	596.2	612.0	16	15	8	5	0	25	10	21	0	
20	26	CECO CONSTRUCTION GROUP, Kansas City, Mo.	C/M	574.2	600.8	82	8	0	0	0	9	0	0	1	
21	22	HAYWARD BAKER INC., A KELLER CO., Hanover, Md.	X	573.7	598.9	42	4	8	5	2	7	31	0	1	
22	21	MCKINSTRY, Seattle, Wash.	M/E	560.0	NA	87	3	0	0	2	5	0	0	3	
23	16	FIVE STAR ELECTRIC CORP., Ozone Park, N.Y.	E	544.8	920.7	42	0	0	0	0	8	38	0	12	
24	24	CENTIMARK CORP., Canonsburg, Pa. <sup>24</sup>	R	540.8	545.1	100	0	0	0	0	0	0	0	0	
25	29	FURMANITE CORP., Houston, Texas <sup>25</sup>	O	529.2	529.2	0	2	9	0	0	72	0	1	0	
26	31	SCHUFF INTERNATIONAL, Phoenix, Ariz.	ST	526.0	NA	55	10	10	0	0	20	5	0	0	
27	28	SOUTHLAND INDUSTRIES, Dulles, Va.	M	517.9	NA	98	0	0	0	0	2	0	0	0	
28	23	BERGEELECTRIC CORP., Los Angeles, Calif.	E	494.1	581.1	75	10	0	0	5	0	5	0	5	
29	41	NOOTER CONSTRUCTION CO., St Louis, Mo.	M	471.0	625.0	0	10	20	5	0	60	0	5	0	
30	30	STEEFAB INC., Charlotte, N.C. <sup>30</sup>	O	445.8	386.7	60	30	10	0	0	0	0	0	0	
31	38	THE NEWTRON GROUP LLC, Baton Rouge, La.	E	435.0	290.0	0	0	22	0	0	75	0	0	3	
32	27	TDINDUSTRIES, Dallas, Texas	M	433.0	433.0	90	1	0	0	0	2	7	0	0	
33	36	ENERGY SERVICES HOLDINGS LLC, Houston, Texas	E	421.8	371.1	0	3	13	0	0	84	0	0	0	
34	34	TERRA MILLENNIUM CORP., Richmond, Calif. <sup>34</sup>	M/O	418.7	425.0	0	0	25	0	0	50	0	0	0	
35	**	VALLEYCREST LANDSCAPE COS., Calabasas, Calif.	O	405.6	412.0	0	0	0	0	0	0	0	0	0	
36	32	ALDRIDGE ELECTRIC, Libertyville, Ill.	E	404.0	397.0	5	0	45	0	0	0	50	0	0	
37	48	THE BRANDT COS., Carrollton, Texas	M	383.0	382.6	85	15	0	0	0	0	0	0	0	
38	42	STRUCTURAL GROUP, Columbia, Md.	C	381.0	400.0	25	0	20	10	0	25	20	0	0	
39	51	GERDAU REINFORCING STEEL, San Diego, Calif. <sup>39</sup>	O	379.6	261.1	60	10	5	0	5	0	20	0	0	
40	40	HELIX ELECTRIC, San Diego, Calif.	E	379.0	412.4	60	5	0	0	10	0	10	0	0	
41	39	FAITH TECHNOLOGIES INC., Menasha, Wis.	E	376.0	231.7	49	30	0	0	1	2	2	2	10	
42	35	HARDER MECHANICAL CONTRACTORS INC., Portland, Ore.	M	375.9	NA	3	40	10	1	0	45	1	0	0	
43	61	JH KELLY, Longview, Wash.	M	355.0	235.0	50	0	0	0	0	50	0	0	0	
44	**	WDF INC., Mount Vernon, N.Y.	M	337.4	347.1	80	0	0	0	20	0	0	0	0	
45	43	E-J ELECTRIC INSTALLATION CO., Long Island City, N.Y.	E	332.0	168.0	20	0	30	20	0	0	30	0	0	
46	47	FSK ELECTRIC CO., Houston, Texas	E	326.9	318.0	55	2	0	0	5	15	8	0	15	
47	37	MORROW-MEADOWS CORP., Industry, Calif.	E	326.5	260.7	70	5	0	0	0	0	20	0	5	
48	56	CONTI CORP., Sterling Heights, Mich.	E	326.5	377.4	33	35	12	0	2	3	0	5	10	
49	**	REDWOOD ELECTRIC GROUP INC., Santa Clara, Calif.	E	320.0	300.0	60	25	0	0	0	0	0	0	15	
50	49	TEAM FISHEL, Columbus, Ohio	U	311.4	350.0	0	0	0	0	0	0	0	0	56	

FOOTNOTES: 3=TELECOM; 4=WORK ACCESS; 5=SCAFFOLDING, INSULATION AND ANCHORAGE SERVICES; 6=SCAFFOLDING, INSULATION AND RELATED SERVICES; 9=TELE DATA; 11=INSULATION; 15=INSPECTION AND HEAT TREATING; 19=PROGRAM MANAGEMENT; 24=QUESTMARK, A DIVISION OF CENTIMARK, COMMERCIAL FLOORING; 25=ENGINEERING, INSPECTION AND SPECIALTY MECHANICAL SERVICES; 30=STEEL FABRICATION; 34=REFRACTORY; 39=REINFORCING STEELWORK

RANK 2015	RANK 2014	FIRM	FIRM TYPE	2014 REVENUE (\$ MIL)		MARKETS (% OF 2014 REVENUE)									
				TOTAL REVENUE	NEW CONTRACTS	GENERAL BUILDING	MANUFACTURING	POWER	WATER SUPPLY	SEWER / WASTE	INDUS. / PETROLEUM	TRANSPORTATION	HAZARDOUS WASTE	TELECOM	
51	**	BOND BROTHERS, Everett, Mass. <sup>51</sup>	U/O	306.0	310.9	10	0	53	0	0	0	5	0	0	
52	52	THE STATE GROUP INC., Evansville, Ind.	E/M	300.1	282.1	12	16	11	0	0	48	12	0	1	
53	64	ALLISON-SMITH CO. LLC, Smyrna, Ga.	E	299.0	225.0	75	5	0	0	5	0	5	0	10	
54	60	MALCOLM DRILLING CO. INC., San Francisco, Calif.	X	298.7	337.1	13	3	0	0	5	0	80	0	0	
55	68	HUNT ELECTRIC CORP., St. Paul, Minn.	E	295.3	220.6	24	35	8	0	0	27	1	0	5	
56	44	LIMBACH FACILITY SERVICES, Pittsburgh, Pa.	M	294.4	338.5	81	10	0	0	0	0	9	0	0	
57	53	WAYNE J. GRIFFIN ELECTRIC INC., Holliston, Mass.	E	293.1	320.8	60	10	0	0	10	0	10	0	10	
58	66	WALTERS & WOLF, Fremont, Calif. <sup>58</sup>	G/O	286.5	323.7	100	0	0	0	0	0	0	0	0	
59	75	MMC CONTRACTORS INC., Kansas City, Mo.	M	280.0	359.1	20	30	5	0	5	40	0	0	0	
60	**	UNIVERSAL PLANT SERVICES INC., Deer Park, Texas <sup>60</sup>	O	279.0	315.0	0	0	5	0	0	80	0	0	0	
61	59	MCKENNEY'S INC., Atlanta, Ga.	M	275.1	NA	100	0	0	0	0	0	0	0	0	
62	73	APOLLO MECHANICAL CONTRACTORS, Kennewick, Wash.	M	273.0	NA	60	15	5	0	0	20	0	0	0	
63	58	SACHS ELECTRIC CO., St. Louis, Mo.	E	271.4	218.0	55	6	20	0	0	14	0	0	5	
64	81	BARNHART, Fairhope, Tenn. <sup>64</sup>	O	268.0	275.0	0	0	40	0	0	60	0	0	0	
65	57	MOTOR CITY ELECTRIC CO., Detroit, Mich.	E	260.5	136.7	20	42	0	4	2	20	2	0	7	
66	54	KHS&S CONTRACTORS, Tampa, Fla.	W	254.2	NA	100	0	0	0	0	0	0	0	0	
67	89	PARSONS ELECTRIC, Minneapolis, Minn.	E	254.2	174.8	48	5	4	0	0	20	5	0	18	
68	78	ARDENT SERVICES LLC, Covington, La.	E	253.4	176.4	0	0	0	0	0	100	0	0	0	
69	65	THE HILL GROUP, Franklin Park, Ill.	M/SH	252.5	149.5	65	6	0	1	1	0	4	0	23	
70	50	U.S. ENGINEERING CO., Kansas City, Mo.	M	252.0	366.7	82	16	0	0	0	2	0	0	0	
71	86	INTREN INC., Union, Ill.	U	247.4	168.0	2	0	98	0	0	0	0	0	0	
72	82	IREX CORP., Lancaster, Pa. <sup>72</sup>	O	246.7	236.3	34	9	23	0	1	23	3	0	1	
73	69	BERKEL & CO. CONTRACTORS INC., Bonner Springs, Kan.	X	243.0	350.0	40	15	15	0	5	20	5	0	0	
74	63	SHAFT DRILLERS INTERNATIONAL LLC, Mt. Morris, Pa. <sup>74</sup>	M/X	242.8	400.0	12	0	72	0	0	15	1	0	0	
75	91	HATZEL & BUEHLER INC., Wilmington, Del.	E	242.6	202.2	60	0	10	0	0	20	0	0	10	
76	101	NEW RIVER ELECTRICAL CORP., Cloverdale, Va.	E	242.5	242.5	0	0	97	0	0	3	0	0	0	
77	**	TINDALL CORP., Spartanburg, S.C.	C	241.8	218.0	60	10	10	0	5	15	0	0	0	
78	45	CACHE VALLEY ELECTRIC CO., Logan, Utah	E	240.2	290.6	21	0	0	0	0	30	7	0	16	
79	77	J.F. AHERN CO., Fond du Lac, Wis.	M/F	239.4	183.6	50	20	5	5	10	10	0	0	0	
80	80	CRITCHFIELD MECHANICAL INC., San Jose, Calif.	M	239.3	254.0	100	0	0	0	0	0	0	0	0	
81	**	POWER DESIGN INC., Saint Petersburg, Fla.	E	237.4	369.7	100	0	0	0	0	0	0	0	0	
82	93	T.A.S. COMMERCIAL CONCRETE CONSTRUCTION LLC, Houston, Texas	C	236.2	251.6	85	10	0	0	0	5	0	0	0	
83	62	ISEC INC., Englewood, Colo. <sup>83</sup>	O	235.5	278.1	100	0	0	0	0	0	0	0	0	
84	70	HARRIS COS., St. Paul, Minn.	M	233.0	334.6	80	0	5	0	5	0	0	10	0	
85	76	DAVIS H. ELLIOT CO. INC., Lexington, Ky.	E	231.7	200.0	5	0	0	0	0	0	0	0	0	
86	88	P1 GROUP INC., Lawrence, Kan.	M/E	220.0	220.0	17	15	4	0	0	16	0	0	8	
87	100	VEIT & CO. INC., Rogers, Minn.	X	218.6	184.0	48	1	15	2	3	14	13	0	0	
88	90	MURPHY CO. MECHANICAL CONTRACTORS & ENGINEERS, St. Louis, Mo.	M	217.5	236.2	50	35	1	0	0	14	0	0	0	
89	83	LARGO CONCRETE INC., Tustin, Calif.	C	216.7	200.0	100	0	0	0	0	0	0	0	0	
90	87	MILLER ELECTRIC CO., Jacksonville, Fla.	E	216.2	285.0	60	0	0	0	0	4	1	0	35	
91	85	SUNCOAST POST-TENSION LTD., Houston, Texas <sup>91</sup>	O	214.4	216.0	100	0	0	0	0	0	0	0	0	
92	95	BRANDENBURG INDUSTRIAL SERVICE CO., Chicago, Ill.	D	212.8	135.0	5	10	15	0	0	50	10	10	0	
93	84	EGAN CO., Brooklyn Park, Minn.	E/M	212.1	241.2	53	30	0	0	0	6	11	0	0	
94	109	JOHN E. GREEN CO., Highland Park, Mich.	M	210.0	NA	35	45	0	0	15	5	0	0	0	
95	79	MANAFORT BROTHERS INC., Plainville, Conn.	C	209.5	225.0	41	0	0	0	10	0	34	0	0	
96	**	JOSEPH J. ALBANESE INC., Santa Clara, Calif. <sup>96</sup>	C/O	208.4	185.0	85	0	0	0	0	0	15	0	0	
97	125	SPRIG ELECTRIC, San Jose, Calif.	E	205.0	212.0	82	5	0	0	0	3	0	0	10	
98	92	HARMON INC., Bloomington, Minn.	G	202.8	238.3	100	0	0	0	0	0	0	0	0	
99	97	WALKER ENGINEERING INC., Irving, Texas	E	201.8	222.4	50	10	0	0	20	0	0	0	20	
100	104	YTG LLC, Philadelphia, Miss.	E/M	198.9	198.4	61	7	10	0	0	22	0	0	0	

FOOTNOTES: 51=GENERAL CONTRACTING/CONSTRUCTION MANAGEMENT; 58=ARCHITECTURAL PRECAST CONCRETE AND INTERIOR DOORS, FRAMES & HANGERS; 60=FIXED AND ROTATING EQUIPMENT SERVICES; 64=LIFTING AND TRANSPORTATION; 72=INSULATION; 74=SUPPORT OF MINING; 83=INTERIOR FINISHES / MILLWORK; 91=POST-TENSION & CONCRETE REINFORCING MATERIALS; 96=GRADING & PAVING

FOOTNOTES: 103=VOICE/DATA CABLING; 120=FABRICATION; 121=TREATMENT & RECYCLING OF CONTAMINATED SOIL, DREDGED SEDIMENTS AND DRILL CUTTINGS; 131=INDUSTRIAL CLEANING, INSULATION, GENERAL MAINTENANCE; 139=STEEL FABRICATION; 140=INSURANCE RESTORATION; 142=CONTROLS AND SECURITY

RANK 2015	RANK 2014	FIRM	FIRM TYPE	2014 REVENUE (\$ MIL)		MARKETS (% OF 2014 REVENUE)								
				TOTAL REVENUE	NEW CONTRACTS	GENERAL BUILDING	MANUFACTURING	POWER	WATER SUPPLY	SEWER / WASTE	INDUS. / PETROLEUM	TRANSPORTATION	HAZARDOUS WASTE	TELECOM
101	72	PENHALL CO., Anaheim, Calif.	D	193.7	147.2	9	7	2	1	1	5	75	0	0
102	128	INDEPENDENCE EXCAVATING INC., Independence, Ohio	X/D	193.3	185.0	35	5	0	0	15	15	30	0	0
103	115	WACHTER INC., Lenexa, Kan. <sup>103</sup>	O/E	192.1	275.9	43	18	0	0	0	39	0	0	0
104	94	BEAVER EXCAVATING CO., Canton, Ohio	X	191.1	190.0	5	0	10	0	15	30	40	0	0
105	106	BIGGE CRANE & RIGGING CO., San Leandro, Calif.	M/ST	191.0	165.0	27	5	20	0	4	29	15	0	0
106	74	MURRAY CO., Rancho Dominguez, Calif.	M	190.0	373.2	30	30	0	0	10	10	10	0	0
107	130	CASEY INDUSTRIAL, Westminster, Colo.	M/E	187.7	167.8	0	22	51	0	0	27	0	0	0
108	103	COCHRAN INC., Seattle, Wash.	E	186.5	207.2	70	0	0	0	0	0	0	0	30
109	156	SUNTEC CONCRETE, Phoenix, Ariz.	C	185.3	173.9	100	0	0	0	0	0	0	0	0
110	107	BAKER ROOFING CO., Raleigh, N.C.	R	184.7	184.7	100	0	0	0	0	0	0	0	0
111	114	J.C. CANNISTRARO LLC, Watertown, Mass.	M	183.6	300.0	95	0	0	0	0	0	5	0	0
112	112	MCCARL'S INC., Cranberry Twp., Pa.	M	183.0	150.0	0	0	28	0	0	72	0	0	0
113	131	CLEVELAND ELECTRIC CO., Atlanta, Ga.	E	177.9	150.0	22	21	25	1	3	3	20	0	5
114	129	CAPFORM INC., Carrollton, Texas	C	175.9	180.7	80	0	0	0	0	0	20	0	0
115	123	THE COASTAL GROUP, Melbourne, Fla.	M	175.8	183.3	100	0	0	0	0	0	0	0	0
116	108	GAYLOR ELECTRIC INC., Indianapolis, Ind.	E	173.1	173.1	30	30	0	0	0	20	0	0	20
117	145	MECHANICAL INC., Freeport, Ill.	M	173.0	215.2	70	0	5	0	5	20	0	0	0
118	142	PRECISION WALLS, Cary, N.C.	W	172.6	152.4	85	5	0	0	0	0	10	0	0
119	150	S&F CONCRETE CONTRACTORS INC., Hudson, Mass.	C	169.8	120.1	93	2	2	1	0	1	2	0	1
120	116	SME STEEL, West Jordan, Utah <sup>120</sup>	O/ST	167.0	210.0	87	3	0	0	0	0	10	0	0
121	118	CLEAN EARTH INC., Hatboro, Pa. <sup>121</sup>	O	164.5	164.5	23	0	4	0	0	21	38	9	0
122	119	WESTERN CONSTRUCTION GROUP, St. Louis, Mo.	C/MA	163.2	167.0	100	0	0	0	0	0	0	0	0
123	134	INGLETT & STUBBS LLC, Mableton, Ga.	E	163.1	215.9	78	0	0	0	0	0	0	0	5
124	**	OSBURN CONTRACTORS INC., Garland, Texas	C	155.0	165.0	100	0	0	0	0	0	0	0	0
125	120	D.H. GRIFFIN WRECKING CO. INC., Greensboro, N.C.	D	153.0	68.0	30	20	30	0	2	10	8	0	0
126	127	ACOUSTI ENGINEERING CO. OF FLORIDA, Orlando, Fla.	W	152.8	88.9	50	10	0	0	0	0	40	0	0
127	126	MILLER ELECTRIC CO., Omaha, Neb.	E	150.7	142.5	94	1	0	0	0	0	0	0	5
128	141	ROGERS ELECTRIC, Alpharetta, Ga.	E	148.2	158.4	97	0	0	0	0	0	0	0	3
129	132	SAUER HOLDINGS INC., Pittsburgh, Pa.	M	147.7	105.2	80	0	0	0	0	20	0	0	0
130	139	GATE PRECAST CO., Jacksonville, Fla.	C	147.3	180.1	95	0	0	0	0	0	5	0	0
131	**	K2 INDUSTRIAL SERVICES INC., Pensacola, Fla. <sup>131</sup>	O/P	146.7	146.7	0	0	46	0	0	47	0	0	0
132	143	JMEG LP, Farmers Branch, Texas	E	145.9	114.8	74	12	0	0	0	0	4	0	0
133	149	E M DUGGAN INC., Canton, Mass.	M	145.8	171.4	100	0	0	0	0	0	0	0	0
134	140	THE RAYMOND GROUP, Orange, Calif.	W	145.6	175.0	100	0	0	0	0	0	0	0	0
135	154	MIDWEST STEEL INC., Detroit, Mich.	ST	143.2	200.8	10	65	0	0	0	21	2	2	0
136	138	IVEY MECHANICAL CO., Kosciusko, Miss.	M	142.8	99.3	45	45	0	0	0	10	0	0	0
137	144	TRI-CITY ELECTRICAL CONTRACTORS INC., Altamonte Springs, Fla.	E	142.7	111.0	98	0	0	0	0	0	0	0	0
138	175	NICHOLSON CONSTRUCTION, Cuddy, Pa.	X	142.0	149.4	32	0	13	18	0	13	24	0	0
139	155	THE WILLIAMS GROUP, Merrifield, Va. <sup>139</sup>	ST/O	139.9	143.6	64	8	8	0	0	20	0	0	0
140	151	AMERICAN TECHNOLOGIES INC., Orange, Calif. <sup>140</sup>	O	138.9	NA	90	5	0	0	0	5	0	0	0
141	180	TRI CITY ELECTRIC CO. OF IOWA, Davenport, Iowa	E	138.7	104.6	57	29	0	0	1	0	1	0	12
142	136	BAKER GROUP, Des Moines, Iowa <sup>142</sup>	M/SH	138.0	171.0	87	1	0	0	0	8	0	0	4
143	122	WORTH & CO. INC., Pipersville, Pa.	M	137.2	146.6	85	0	0	0	15	0	0	0	0
144	133	LEE CO., Franklin, Tenn.	M	136.5	145.8	85	15	0	0	0	0	0	0	0
145	192	A.O. REED & CO., San Diego, Calif.	M	135.0	120.0	85	10	0	0	0	5	0	0	0
146	124	CSI ELECTRICAL CONTRACTORS INC., Santa Fe Springs, Calif.	E	134.6	153.5	38	10	1	3	3	4	1	0	5
147	146	BAKER TRIANGLE, Dallas, Texas	W	132.6	144.5	85	15	0	0	0	0	0	0	0
148	229	KENT COS., Grand Rapids, Mich.	C	132.5	147.4	65	15	0	0	0	10	10	0	0
149	99	THE MORSE GROUP INC., Freeport, Ill.	E	132.1	195.9	75	15	0	0	10	0	0	0	0
150	153	O'CONNELL ELECTRIC CO. INC., Victor, N.Y.	E	129.5	125.0	34	4	2	0	2	8	3	0	5

RANK 2015	RANK 2014	FIRM	FIRM TYPE	2014 REVENUE (\$ MIL)		MARKETS (% OF 2014 REVENUE)									
				TOTAL REVENUE	NEW CONTRACTS	GENERAL BUILDING	MANUFACTURING	POWER	WATER SUPPLY	SEWER / WASTE	INDUS. / PETROLEUM	TRANSPORTATION	HAZARDOUS WASTE	TELECOM	
151	195	CHERRY COS., Houston, Texas <sup>151</sup>	O/D	127.1	25.0	13	0	0	0	0	0	9	78	0	0
152	**	ENVIROCON, Missoula, Mont. <sup>152</sup>	O/D	127.0	97.0	0	25	19	3	0	30	0	23	0	
153	**	VAUGHN INDUSTRIES LLC, Carey, Ohio	E/U	126.7	149.2	55	15	0	0	0	0	0	0	0	
154	212	PLATEAU EXCAVATION, Austell, Ga.	X	125.6	135.9	65	25	5	0	5	0	0	0	0	
155	**	BOMEL CONSTRUCTION CO. INC., Anaheim Hills, Calif.	C	124.0	105.4	100	0	0	0	0	0	0	0	0	
156	177	CASE FOUNDATION CO., A KELLER CO., Roselle, Ill.	X	123.6	128.3	39	6	16	0	0	0	39	0	0	
157	169	VSC FIRE & SECURITY INC., Ashland, Va.	F	122.2	74.1	65	5	0	0	0	0	0	0	30	
158	147	MCKINNEY DRILLING CO., A KELLER CO., Hanover, Md.	X	122.0	116.1	30	7	38	0	0	1	24	0	0	
159	161	NATIONS ROOF, Lithia Springs, Ga.	R	122.0	144.0	40	25	0	0	0	20	5	0	10	
160	117	STANDARD DRYWALL INC., Lakeside, Calif.	W	121.6	245.9	100	0	0	0	0	0	0	0	0	
161	201	MAGNUS PACIFIC LLC, Rocklin, Calif.	X	121.5	133.5	0	0	0	0	0	0	0	0	0	
162	234	RYAN INC. CENTRAL, Janesville, Wis.	X	120.4	110.6	34	0	32	0	33	0	0	0	0	
163	183	FREESTATE ELECTRICAL SERVICE CO., Laurel, Md.	E	120.0	120.0	90	0	0	0	0	0	0	0	10	
164	105	PAYNECREST ELECTRIC INC., St. Louis, Mo.	E	120.0	150.0	14	21	38	0	0	20	1	0	6	
165	166	FRESH MEADOW MECHANICAL CORP., Fresh Meadows, N.Y.	M	116.5	53.0	95	0	5	0	0	0	0	0	0	
166	160	MCM MANAGEMENT CORP., Bloomfield Hills, Mich.	D	115.0	85.0	10	0	0	0	0	30	0	20	0	
167	189	SHAPIRO & DUNCAN INC., Rockville, Md.	M	115.0	110.0	100	0	0	0	0	0	0	0	0	
168	233	OKLAHOMA ELECTRICAL SUPPLY CO., Oklahoma City, Okla.	E	114.9	70.3	28	1	13	0	0	2	0	0	8	
169	121	AZCO INC., Appleton, Wis.	M	114.6	204.2	0	3	63	0	0	17	0	0	0	
170	174	INTERSTATES COS., Sioux Center, Iowa	E	114.3	99.5	5	5	10	0	0	30	0	0	0	

## MARKETS (% OF 2014 REVENUE)

RANK 2015	RANK 2014	FIRM	FIRM TYPE	2014 REVENUE (\$ MIL)		MARKETS (% OF 2014 REVENUE)								
				TOTAL REVENUE	NEW CONTRACTS	GENERAL BUILDING	MANUFACTURING	POWER	WATER SUPPLY	SEWER / WASTE	INDUS. / PETROLEUM	TRANSPORTATION	HAZARDOUS WASTE	TELECOM
171	184	ALEX E. PARIS CONTRACTING CO. INC., Atlasburg, Pa. <sup>171</sup>	U/X	113.4	60.0	0	0	5	10	25	55	5	0	0
172	157	LAKE ERIE ELECTRIC INC., Westlake, Ohio	E	112.8	150.0	50	0	0	0	0	50	0	0	0
173	164	CHAPEL ELECTRIC CO. LLC, Dayton, Ohio	E	111.0	70.0	70	14	0	0	3	3	0	0	10
174	167	J DERENZO CO., Brockton, Mass.	X	111.0	146.0	100	0	0	0	0	0	0	0	0
175	162	W.A. RASIC CONSTRUCTION CO. INC., Long Beach, Calif.	U	111.0	160.0	0	0	0	35	17	8	0	0	39
176	223	CONCRETE STRATEGIES LLC, St. Louis, Mo.	C	110.4	122.0	60	25	0	0	0	0	15	0	0
177	203	PRISM ELECTRIC INC., Garland, Texas	E	110.3	80.2	35	10	0	0	0	10	15	0	0
178	168	CALIFORNIA DRYWALL, San Jose, Calif.	W	109.4	160.0	100	0	0	0	0	0	0	0	0
179	165	H.J. MARTIN AND SON INC., Green Bay, Wis. <sup>179</sup>	W	109.3	80.0	98	0	0	0	0	0	2	0	0
180	217	CUMMINGS ELECTRICAL LP, Fort Worth, Texas	E	109.0	66.0	25	10	0	0	0	20	0	0	0
181	230	W.A. CHESTER LLC, Lanham, Md.	U	107.7	87.6	0	0	100	0	0	0	0	0	0
182	191	WEST VALLEY CONSTRUCTION CO. INC., Campbell, Calif.	U	106.7	106.8	0	0	15	65	5	0	0	0	15
183	163	LETSOS CO., Houston, Texas	M	106.1	62.8	92	0	0	0	0	8	0	0	0
184	204	REX MOORE ELECTRICAL CONTRACTORS & ENGINEERS, Sacramento, Calif.	E	105.4	130.2	30	20	0	0	0	20	0	0	0
185	298	MCHUGH CONCRETE CONSTRUCTION, Chicago, Ill.	C	105.3	NA	96	0	0	0	0	0	4	0	0
186	173	FOLEY CO., Kansas City, Mo.	M/C	105.0	105.0	0	15	22	18	30	15	0	0	0
187	158	CONTINENTAL ELECTRICAL CONSTRUCTION CO., Oak Brook, Ill.	E	104.4	100.0	60	20	0	0	0	0	0	0	20
188	199	NATIONAL CONSTRUCTION ENTERPRISES INC., Ypsilanti, Mich.	W	104.1	101.7	100	0	0	0	0	0	0	0	0
189	206	ARDEN BUILDING COS. LLC, Pawtucket, R.I.	M/E	102.6	111.4	64	15	8	0	5	0	5	0	3
190	**	PACIFIC STRUCTURES INC., San Francisco, Calif.	C	102.3	175.9	100	0	0	0	0	0	0	0	0

FOOTNOTES: 171=INDUSTRIAL; 179=COMMERCIAL/RESIDENTIAL FLOORING,  
POLISHED CONCRETE, RETAIL FIXTURE/MILKWORK INSTALLATION

RANK 2015	RANK 2014	FIRM	FIRM TYPE	2014 REVENUE (\$ MIL)		MARKETS (% OF 2014 REVENUE)								
				TOTAL REVENUE	NEW CONTRACTS	GENERAL BUILDING	MANUFACTURING	POWER	WATER SUPPLY	SEWER / WASTE	INDUS. / PETROLEUM	TRANSPORTATION	HAZARDOUS WASTE	TELECOM
191	235	HERMANSON CO., Kent, Wash.	M	101.1	101.9	89	11	0	0	0	0	0	0	0
192	222	VALLEY ELECTRIC CO. OF MOUNT VERNON INC., Everett, Wash.	E	101.0	139.3	30	20	0	5	10	20	10	0	5
193	231	MONA ELECTRIC GROUP INC., Clinton, Md.	E	101.0	68.0	95	0	0	0	0	0	0	0	5
194	**	PAL ENVIRONMENTAL SERVICES, Long Island City, N.Y.	A	100.1	132.9	0	0	0	0	0	0	0	100	0
195	284	BASDEN STEEL CORP., Burleson, Texas <sup>195</sup>	ST/O	100.0	76.2	100	0	0	0	0	0	0	0	0
196	215	MOBLEY INDUSTRIAL SERVICES, Deer Park, Texas <sup>196</sup>	P/O	100.0	120.0	0	0	5	0	0	95	0	0	0
197	170	W&W GLASS LLC, Nanuet, N.Y.	G	100.0	200.0	90	0	0	0	0	0	10	0	0
198	176	PACIFIC RIM MECHANICAL CONTRACTORS INC., Santa Ana, Calif.	M	100.0	100.0	100	0	0	0	0	0	0	0	0
199	210	CONDON-JOHNSON & ASSOCIATES, Oakland, Calif.	X	99.4	107.0	35	0	10	20	10	0	25	0	0
200	197	RUTTURA & SONS CONSTRUCTION, West Babylon, N.Y.	X	99.1	83.3	70	0	0	0	15	0	15	0	0
201	267	RACHEL CONTRACTING, St. Michael, Minn.	X	98.7	91.0	24	0	9	0	2	44	21	0	0
202	187	COMMONWEALTH ELECTRIC CO. OF THE MIDWEST, Lincoln, Neb.	E	98.1	136.5	58	0	6	0	0	25	4	0	4
203	302	NATIONAL STEEL CITY LLC., Plymouth, Mich.	ST	97.7	75.0	20	0	80	0	0	0	0	0	0
204	196	KALKREUTH ROOFING & SHEET METAL INC., Wheeling, W.Va.	R	96.8	81.3	85	7	0	0	0	8	0	0	0
205	194	GRUNAU CO., Oak Creek, Wis.	M	96.5	128.9	45	20	0	0	10	20	5	0	0
206	213	THE BP GROUP, Glendale, N.Y.	M	95.7	71.0	100	0	0	0	0	0	0	0	0
207	**	T.B. PENICK & SONS INC., San Diego, Calif.	C	94.7	98.8	80	0	0	0	20	0	0	0	0
208	188	CROWN CORR INC., Gary, Ind.	SH/G	94.0	145.3	75	20	0	0	0	0	5	0	0
209	179	ERMCO INC., Indianapolis, Ind.	M	93.9	99.8	30	10	10	0	10	20	5	0	15
210	226	VEE-JAY CEMENT CONTRACTING CO. INC., St. Louis, Mo.	C	93.7	90.0	86	14	0	0	0	0	0	0	0
211	211	MILLER INSULATION, Bismarck, N.D. <sup>211</sup>	O	93.4	36.3	18	0	0	0	0	82	0	0	0
212	278	KSW MECHANICAL SERVICES INC., Long Island City, N.Y.	M	93.0	34.0	100	0	0	0	0	0	0	0	0
213	263	PANELIZED STRUCTURES INC., Modesto, Calif. <sup>213</sup>	O	92.1	105.5	100	0	0	0	0	0	0	0	0
214	224	DORVIN D. LEIS CO. INC., Kahului, Hawaii	M	91.5	83.8	98	0	1	0	1	0	0	0	0
215	227	USA ENVIRONMENT LP, Houston, Texas <sup>215</sup>	O	90.1	63.0	0	5	0	0	0	55	10	30	0
216	246	BELDON GROUP, San Antonio, Texas <sup>216</sup>	O/R	89.7	87.0	100	0	0	0	0	0	0	0	0
217	240	F L CRANE & SONS, Fulton, Miss.	W	89.4	99.4	100	0	0	0	0	0	0	0	0
218	185	E.S. WAGNER CO., Oregon, Ohio	X	88.7	114.0	0	3	0	0	0	12	85	0	0
219	186	NEWKIRK ELECTRIC, Muskegon, Maine	M	88.3	110.1	2	3	45	0	0	10	0	0	20
220	372	ASSOCIATED CONSTRUCTION & ENGINEERING INC., Laguna Hills, Calif.	ST/C	88.2	72.8	0	9	0	56	0	35	0	0	0
221	239	E LIGHT ELECTRIC SERVICES INC., Englewood, Colo.	E	88.0	96.0	100	0	0	0	0	0	0	0	0
222	256	WAYNE BROTHERS INC., Davidson, N.C.	C	86.8	74.1	17	19	1	0	0	5	1	0	58
223	**	BERMUDEZ, LONGO, DIAZ-MASSO LLC, San Juan, P.R. <sup>223</sup>	E/M	86.4	45.0	0	15	0	14	0	27	11	0	6
224	243	T E C INDUSTRIAL, Kingsport, Tenn.	E/M	86.3	93.5	0	0	15	0	0	85	0	0	0
225	291	COMNET COMMUNICATIONS LLC, Bethel, Conn. <sup>225</sup>	O	86.2	84.7	90	2	0	0	0	0	0	0	8
226	252	WESTSIDE MECHANICAL GROUP, Naperville, Ill.	M	85.8	88.6	100	0	0	0	0	0	0	0	0
227	218	HUMPHREY & ASSOCIATES INC., Fort Worth, Texas	E/M	85.6	NA	75	20	5	0	0	0	0	0	0
228	**	NASHVILLE MACHINE CO. INC., Nashville, Tenn. <sup>228</sup>	M/O	85.4	61.7	78	12	0	0	0	10	0	0	0
229	**	HYPOWER INC., Fort Lauderdale, Fla.	E	85.0	90.0	85	0	0	0	0	0	0	0	15
230	**	INDUSTRIAL POWER SYSTEMS, Rossford, Ohio	M	85.0	80.0	0	40	5	5	0	50	0	0	0
231	193	ALTERMAN INC., San Antonio, Texas	E	84.7	122.7	75	5	0	0	5	5	0	0	10
232	208	KELSO-BURNETT CO., Rolling Meadows, Ill.	E	84.6	102.1	65	15	14	0	0	0	0	0	6
233	228	WILSON ELECTRIC SERVICES CORP, Tempe, Ariz. <sup>233</sup>	E	84.5	112.5	71	0	0	0	0	23	0	0	6
234	214	HUSSUNG MECHANICAL CONTRACTORS INC., Louisville, Ky.	M	84.4	NA	70	20	0	0	5	5	0	0	0
235	249	MCGEE BROTHERS CO. INC., Monroe, N.C.	MA	83.6	8.1	100	0	0	0	0	0	0	0	0
236	339	NORTHLAND CONCRETE & MASONRY CO. LLC, Burnsville, Minn.	C/MA	83.2	89.5	60	20	0	0	0	20	0	0	0
237	257	HI-TECH ELECTRIC INC., Houston, Texas	E	82.4	72.5	40	30	0	0	5	20	0	0	5
238	338	NETWORK INFRASTRUCTURE INC., Hempstead, N.Y.	U	82.1	79.3	0	0	0	0	0	0	0	0	5
239	308	ENTERPRISE PROPERTIES INC., Omaha, Neb.	C	82.1	85.0	70	0	0	0	10	0	20	0	0
240	200	ENTERPRISE ELECTRIC LLC, Nashville, Tenn.	E	81.9	161.0	90	0	0	0	0	0	0	0	10

FOOTNOTES: 195=CRANE SERVICE; 196=INSULATION, SCAFFOLDING, FIREPROOFING; 211=INSULATION; 213=INSULATION; 215=ENVIRONMENTAL CONSTRUCTION/REMEDIATION; 216=ENVIRONMENTAL CONSTRUCTION/REMEDIATION; 218=GLASS; 223=TELECOMMUNICATIONS; 225=TELECOM CABLING INFRASTRUCTURE; 228=ELEVATOR; 233=LOW VOLTAGE SPECIAL SYSTEMS



**SAFWAY GROUP HOLDING LLC** on Aug. 27 announced that it acquired Moblely Industrial Services Inc., La Porte, Texas.

MARKETS (% OF 2014 REVENUE)

RANK 2015	2014	FIRM	FIRM TYPE	2014 REVENUE (\$ MIL)		MARKETS (% OF 2014 REVENUE)								
				TOTAL REVENUE	NEW CONTRACTS	GENERAL BUILDING	MANUFACTURING	POWER	WATER SUPPLY	SEWER / WASTE	INDUS. / PETROLEUM	TRANSPORTATION	HAZARDOUS WASTE	TELECOM.
241	283	<b>G M MCCROSSIN INC.</b> , Bellefonte, Pa.	X/M/C	80.9	59.6	5	14	8	10	18	18	16	8	3
242	280	<b>A.C. DELLOVADE INC.</b> , Canonsburg, Pa.	SH/G	80.5	66.6	25	30	25	0	0	10	10	0	0
243	178	<b>VEC INC.</b> , Girard, Ohio	E/M	80.0	75.0	0	35	0	0	0	50	0	0	15
244	248	<b>STARK EXCAVATING INC.</b> , Bloomington, Ill.	X/U/C	80.0	81.7	0	5	0	8	17	0	70	0	0
245	209	<b>BUCKNER COS.</b> , Graham, N.C.	ST	79.7	62.7	30	60	0	0	0	10	0	0	0
246	225	<b>BIERLEIN COS.</b> , Midland, Mich.	D	79.1	60.1	12	8	58	2	0	11	0	9	0
247	255	<b>E S BOULOS CO.</b> , Westbrook, Maine	E	78.8	66.2	40	5	30	0	0	5	10	0	10
248	266	<b>NEAD ELECTRIC INC.</b> , East Rutherford, N.J.	E	78.7	88.2	75	0	0	0	0	0	10	0	15
249	247	<b>MUTH ELECTRIC INC.</b> , Mitchell, S.D.	E	78.5	79.3	57	7	2	11	7	4	5	0	7
250	293	<b>STEINY &amp; CO. INC.</b> , Baldwin Park, Calif.	E	78.5	60.5	8	0	0	0	12	0	79	0	0
251	332	<b>W.G. TOMKO INC.</b> , Finleyville, Pa. <sup>251</sup>	M	78.0	91.0	85	5	0	0	10	0	0	0	0
252	172	<b>LPR CONSTRUCTION</b> , Loveland, Colo. <sup>252</sup>	ST/O	77.8	75.3	39	2	12	0	0	44	4	0	0
253	**	<b>PRIME CONTROLS LP</b> , Lewisville, Texas <sup>253</sup>	O	77.2	96.6	0	10	0	18	9	49	14	0	0
254	**	<b>PRIME ELECTRIC</b> , Bellevue, Wash.	E	77.2	79.8	45	38	0	0	2	0	5	0	10
255	148	<b>CHARTER MECHANICAL CONTRACTORS</b> , Portland, Ore.	M	76.7	51.0	10	90	0	0	0	0	0	0	0
256	254	<b>VAN ERT ELECTRIC CO. INC.</b> , Wausau, Wis. <sup>256</sup>	E	76.7	40.0	33	0	11	0	1	44	5	0	6
257	232	<b>DRILL TECH DRILLING &amp; SHORING INC.</b> , Antioch, Calif.	X	76.5	86.3	23	0	0	25	1	0	50	1	0
258	182	<b>GREENBERRY INDUSTRIAL</b> , Vancouver, Wash.	M	76.1	NA	0	38	11	6	0	45	0	0	0
259	282	<b>THE TRI-M GROUP LLC</b> , Kennett Square, Pa.	E	75.9	82.2	45	15	7	0	1	22	0	0	10
260	237	<b>UNIVERSAL BUILDERS SUPPLY INC.</b> , New Rochelle, N.Y. <sup>260</sup>	O	75.0	44.0	100	0	0	0	0	0	0	0	0
261	276	<b>UNIVERSITY MECHANICAL CONTRACTORS INC.</b> , Mukilteo, Wash.	M	74.0	NA	50	25	0	0	0	0	0	0	0
262	271	<b>PRECISION CONCRETE CONSTRUCTION INC.</b> , Alpharetta, Ga.	C	73.7	94.3	55	15	0	0	0	20	0	0	0
263	310	<b>THOMPSON ELECTRIC CO.</b> , Sioux City, Iowa	E	73.7	73.7	65	8	5	0	5	15	0	0	2
264	300	<b>EDGERTON CONTRACTORS INC.</b> , Oak Creek, Wis.	X	72.6	109.6	46	0	9	0	0	6	39	0	0
265	**	<b>CEC COS.</b> , Fort Worth, Texas <sup>265</sup>	E	72.5	45.0	50	30	0	0	0	0	0	0	5
266	265	<b>MARINA LANDSCAPE INC.</b> , Orange, Calif. <sup>266</sup>	O	72.5	92.0	50	0	0	0	5	0	45	0	0
267	261	<b>DUCCI ELECTRICAL CONTRACTORS INC.</b> , Farmington, Conn.	E	72.1	106.5	60	0	0	0	0	0	30	0	10
268	318	<b>THE SYSTEMS GROUP</b> , El Dorado, Ark.	M	72.0	72.0	0	10	10	0	0	75	0	0	0
269	286	<b>WAYNE AUTOMATIC FIRE SPRINKLERS INC.</b> , Ocoee, Fla.	F	71.8	65.6	100	0	0	0	0	0	0	0	0
270	216	<b>FOUNDATION CONSTRUCTORS INC.</b> , Oakley, Calif.	X	71.3	66.2	47	0	0	0	14	2	37	0	0
271	295	<b>PITTSBURG TANK AND TOWER GROUP INC.</b> , Henderson, Ky. <sup>271</sup>	ST/P	71.3	73.0	0	14	15	14	0	35	0	0	22
272	362	<b>SERETTA CONSTRUCTION</b> , Apopka, Fla.	C	71.2	NA	100	0	0	0	0	0	0	0	0
273	322	<b>KARAS &amp; KARAS GLASS CO. INC.</b> , South Boston, Mass.	G	71.1	136.7	100	0	0	0	0	0	0	0	0
274	253	<b>GEO-SOLUTIONS INC.</b> , New Kensington, Pa. <sup>274</sup>	O	71.0	65.0	0	0	0	0	0	0	0	100	0
275	324	<b>F.D. THOMAS INC.</b> , Medford, Ore. <sup>275</sup>	P	70.8	69.2	20	10	0	10	20	0	20	20	0
276	273	<b>TRAFFIC CONTROL DEVICES INC.</b> , Altamonte Springs, Fla.	E	70.0	225.2	0	0	0	0	0	0	100	0	0
277	313	<b>BRUCE &amp; MERRILEES ELECTRIC</b> , New Castle, Pa.	E	69.6	75.0	5	5	5	0	5	15	45	0	0
278	307	<b>VELLUTINI CORP. DBA ROYAL ELECTRIC CO.</b> , Sacramento, Calif.	E	69.5	49.8	30	0	0	0	0	0	70	0	0
279	335	<b>BAYSIDE INTERIORS INC.</b> , Fremont, Calif.	W	68.9	76.0	100	0	0	0	0	0	0	0	0
280	251	<b>SURE STEEL INC.</b> , South Weber, Utah	ST	68.9	60.0	50	10	0	0	0	40	0	0	0
281	275	<b>B.T. MANCINI CO. INC.</b> , Milpitas, Calif. <sup>281</sup>	SH/O	68.8	76.0	95	0	0	0	0	0	5	0	0
282	347	<b>GAINES AND CO.</b> , Reisterstown, Md. <sup>282</sup>	U	68.7	72.1	85	0	0	10	5	0	0	0	0
283	**	<b>MIDWEST DRYWALL CO. INC.</b> , Wichita, Kan.	W	68.1	75.0	99	1	0	0	0	0	0	0	0
284	325	<b>HOLLAND ROOFING</b> , Florence, Ky.	R/SH	68.0	63.0	100	0	0	0	0	0	0	0	0
285	250	<b>OIL CAPITAL ELECTRIC LLC</b> , Broken Arrow, Okla.	E/M	67.3	65.0	70	0	5	0	15	10	0	0	0
286	287	<b>BIRDPAIR CORP.</b> , Amherst, N.Y.	R	67.0	58.0	100	0	0	0	0	0	0	0	0
287	**	<b>DONLEY'S INC.</b> , Cleveland, Ohio	C	67.0	92.5	85	10	0	0	0	1	4	0	0
288	269	<b>MARATHON ELECTRICAL CONTRACTORS INC.</b> , Birmingham, Ala.	E	66.7	62.0	65	10	0	0	0	10	5	0	10
289	345	<b>GROUP BUILDERS INC.</b> , Honolulu, Hawaii	W	66.6	59.8	100	0	0	0	0	0	0	0	0
290	152	<b>DELTA DIVERSIFIED ENTERPRISES INC.</b> , Tempe, Ariz.	E	66.0	81.0	80	20	0	0	0	0	0	0	0

FOOTNOTES: 251=OIL & GAS FAB.; 252=HEAVY INDUSTRIAL; 253=TELECOMMUNICATIONS & PHONE SYSTEMS; 256=SCAFFOLDING/HOISTING/PROTECTION; 265=STRUCTURAL CABLING; 266=LANDSCAPE AND IRRIGATION; 271=TOWER MAINTENANCE; 274=HAZARDOUS WASTE/SOLID WASTE; 275=WATERPROOFING; 281=FLOORING; 282=GENERAL CONSTRUCTION

RANK 2015	RANK 2014	FIRM	FIRM TYPE	2014 REVENUE (\$ MIL)		MARKETS (% OF 2014 REVENUE)								
				TOTAL REVENUE	NEW CONTRACTS	GENERAL BUILDING	MANUFACTURING	POWER	WATER SUPPLY	SEWER / WASTE	INDUS. / PETROLEUM	TRANSPORTATION	HAZARDOUS WASTE	TELECOM
291	159	PIPING & EQUIPMENT CO. INC., Wichita, Kan. <sup>291</sup>	O	66.0	66.0	0	0	20	0	0	70	0	0	0
292	367	FRISCHHERTZ ELECTRIC, New Orleans, La.	E	66.0	34.2	74	9	0	0	0	0	12	0	5
293	279	FAULCONER CONSTRUCTION CO. INC., Charlottesville, Va.	X/U	65.4	109.2	40	0	0	0	30	0	30	0	0
294	374	BROADWAY ELECTRIC, Elk Grove Village, Ill.	E/M	65.3	62.1	75	5	0	0	10	5	0	0	5
295	219	ELDECO INC., Greenville, S.C.	E	65.1	71.7	25	75	0	0	0	0	0	0	0
296	352	R.T. MOORE CO. INC., Indianapolis, Ind.	M	64.3	NA	100	0	0	0	0	0	0	0	0
297	361	SUPERIOR AIR HANDLING, Clearfield, Utah	SH	64.2	44.8	66	1	33	0	0	0	0	0	0
298	181	COLLINS ELECTRICAL CO. INC., Stockton, Calif.	E	63.9	86.6	81	0	5	1	2	0	3	0	0
299	320	MODERN PIPING INC., Cedar Rapids, Iowa	M	63.8	50.0	74	24	0	0	0	0	0	2	0
300	202	MIDSTATE MECHANICAL, Phoenix, Ariz.	M	63.3	58.6	100	0	0	0	0	0	0	0	0
301	**	ELLINGSON COS., West Concord, Minn. <sup>301</sup>	U/X	63.3	68.4	0	0	0	10	20	10	0	0	5
302	314	NEVELL GROUP INC., Brea, Calif.	W	63.1	83.5	100	0	0	0	0	0	0	0	0
303	**	FLYNN, Plymouth, Minn.	R/SH	63.0	90.0	86	10	2	0	0	2	0	0	0
304	274	MIDASCO LLC, Elkridge, Md.	E/U	62.9	112.0	0	0	0	0	0	0	100	0	0
305	304	FIORE & SONS INC., Denver, Colo.	X/U	62.6	73.6	46	6	5	20	5	5	13	0	0
306	285	J. RANCK ELECTRIC INC., Mount Pleasant, Mich.	E	62.5	51.8	22	3	27	0	2	17	29	0	0
307	309	CHARLES E. JARRELL CONTRACTING INC., Earth City, Mo.	M/SH	62.5	65.5	100	0	0	0	0	0	0	0	0
308	272	BEST CONTRACTING SERVICES INC., Gardena, Calif. <sup>308</sup>	R	62.3	96.6	90	0	0	0	0	0	10	0	0
309	299	MARKHAM CONTRACTING CO. INC., Phoenix, Ariz.	X	61.8	55.0	82	0	1	0	0	1	16	0	0
310	288	JB HENDERSON CONSTRUCTION CO. INC., Albuquerque, N.M.	M	61.4	71.6	30	70	0	0	0	0	0	0	0
311	242	THE FARFIELD CO., Lititz, Pa.	M/E	61.1	44.3	89	0	0	0	0	0	11	0	0
312	311	DOUGLASS COLONY GROUP, Commerce City, Colo.	R/SH	61.0	72.0	100	0	0	0	0	0	0	0	0
313	354	H.T. SWEENEY & SON INC., Brookhaven, Pa.	X	59.2	60.9	20	5	20	0	0	48	2	2	3
314	384	ICON MECHANICAL CONSTRUCTION & ENGINEERING LLC, Granite City, Ill.	M	59.0	89.0	55	0	10	0	0	35	0	0	0
315	259	MATCO ELECTRIC CORP., Vestal, N.Y.	E	59.0	22.9	60	5	5	0	5	10	0	0	15
316	306	TECHNO COATINGS INC., Anaheim, Calif.	P	58.4	56.8	10	10	10	10	10	30	10	10	0
317	305	BUIST ELECTRIC, Byron Center, Mich.	E	58.2	54.0	30	40	0	0	0	20	0	0	10
318	346	SCHLOUCH INC., Blandon, Pa.	X	57.7	65.3	49	3	0	6	24	0	18	0	0
319	260	R. W. WARNER INC., Frederick, Md.	M	57.7	53.8	100	0	0	0	0	0	0	0	0
320	**	AREA ENERGY & ELECTRIC INC., Sidney, Ohio <sup>320</sup>	E/M	57.3	57.3	5	75	0	0	0	15	0	0	5
321	**	RMCI INC., Albuquerque, N.M.	U	57.3	54.3	0	0	0	38	49	0	13	0	0
322	498	JDC DEMOLITION INC., Boston, Mass.	D	57.0	78.0	40	20	20	0	0	20	0	0	0
323	296	LATITE ROOFING AND SHEET METALS LLC, Pompano Beach, Fla.	R	56.8	54.2	100	0	0	0	0	0	0	0	0
324	395	SOUTHERN CONTRACTING CO., San Marcos, Calif.	E	56.8	29.1	5	0	0	0	90	0	0	0	5
325	**	MARTIN PETERSEN CO. INC., Kenosha, Wis.	M	56.6	58.2	60	20	0	0	0	20	0	0	0
326	383	CAID INDUSTRIES INC., Tucson, Ariz. <sup>326</sup>	O	56.1	45.0	0	20	5	0	5	70	0	0	0
327	326	GREGG ELECTRIC INC., Ontario, Calif.	E	55.9	48.9	80	10	10	0	0	0	0	0	0
328	262	TOPCOR, Baton Rouge, La. <sup>328</sup>	O	55.8	62.5	3	0	2	0	0	85	10	0	0
329	270	EDWIN L HEIM CO, Harrisburg, S.C.	E/M	55.6	50.8	31	11	5	0	6	37	0	0	10
330	330	SCHREIBER CORP., Wixom, Mich.	R	55.4	55.4	10	80	0	0	0	10	0	0	0
331	297	FERGUSON, Plainville, Conn.	M	55.0	67.4	98	0	0	0	2	0	0	0	0
332	348	DALEY'S DRYWALL & TAPING INC., Campbell, Calif.	W	54.5	56.4	100	0	0	0	0	0	0	0	0
333	360	BERGER ENGINEERING CO., Dallas, Texas	M	54.5	57.0	97	3	0	0	0	0	0	0	0
334	382	CLEVELAND CEMENT CONTRACTORS INC., Cleveland, Ohio	C	54.3	65.8	70	15	0	0	0	15	0	0	0
335	**	BROOKS-BERRY-HAYNE & ASSOC. INC., Mableton, Ga.	E	54.0	54.0	0	0	0	0	0	0	100	0	0
336	**	ENERGY AIR INC., Orlando, Fla.	M	53.5	60.0	80	5	0	0	0	0	8	8	0
337	294	GREAT LAKES PLUMBING & HEATING CO., Chicago, Ill.	M/F	53.1	96.0	100	0	0	0	0	0	0	0	0
338	340	TAYLOR ELECTRIC INC., Salt Lake City, Utah	E	53.0	42.8	100	0	0	0	0	0	0	0	0
339	319	A-C ELECTRIC CO., Bakersfield, Calif.	E	52.8	43.8	23	1	18	0	4	32	22	0	0
340	317	UNITED FORMING INC., Austell, Ga.	C	52.8	101.6	62	0	0	0	0	0	38	0	0

FOOTNOTES: 291—HEAVY INDUSTRIAL; 301—AGRICULTURAL TILE INSTALLATION; 308—WATERPROOFING; 320—SYSTEMS INTEGRATION / TECHNOLOGY; 326—METAL FAB. AUTOMATION, MACHINING; 328—STRUCTURAL STEEL AND CONCRETE RESTORATION AND PROTECTION; HDPE PIPE FABRICATION AND INSTALLATION, RAILROAD MAINTENANCE AND CONSTRUCTION



MARKETS (% OF 2014 REVENUE)

RANK 2015	2014	FIRM	FIRM TYPE	2014 REVENUE (\$ MIL)		MARKETS (% OF 2014 REVENUE)										
				TOTAL REVENUE	NEW CONTRACTS	GENERAL BUILDING	MANUFACTURING	POWER	WATER SUPPLY	SEWER / WASTE	INDUS. / PETROLEUM	TRANSPORTATION	HAZARDOUS WASTE	TELECOM.		
341	**	ARCHITECTURAL WALL SYSTEMS LLC, Clive, Iowa	G	52.6	38.7	96	0	0	0	0	0	0	0	0	0	0
342	397	BOYETT CONSTRUCTION INC., Hayward, Calif. <sup>342</sup>	W/MA	52.2	48.0	90	0	0	0	0	0	5	0	0	0	0
343	238	FRANK M. BOOTH INC., Marysville, Calif.	M	52.0	104.9	100	0	0	0	0	0	0	0	0	0	0
344	**	RABALAIS I & E CONSTRUCTORS, Corpus Christi, Texas	E	52.0	52.0	5	10	0	0	0	80	0	0	0	0	0
345	277	JOHN A. PENNEY CO. INC., Cambridge, Mass.	E	51.3	27.0	80	0	0	0	0	0	0	0	0	0	0
346	333	HEPACO LLC, Charlotte, N.C. <sup>346</sup>	O	51.3	74.0	0	0	0	0	0	0	0	100	0	0	0
347	445	JOSLIN CONSTRUCTION, Porter, Texas	U/W	51.3	72.8	100	0	0	0	0	0	0	0	0	0	0
348	337	DUNBAR MECHANICAL INC., Toledo, Ohio <sup>348</sup>	M	51.1	21.0	16	36	7	0	0	12	0	0	0	0	0
349	355	SLACK & CO. CONTRACTING INC., Houston, Texas	U/X	51.0	55.4	100	0	0	0	0	0	0	0	0	0	0
350	344	DUNKIN & BUSH INC., Kirkland, Wash. <sup>350</sup>	P/O	50.2	50.0	0	0	10	0	0	80	10	0	0	0	0
351	357	RICHARD GOETTLE INC., Cincinnati, Ohio	X	50.0	39.5	50	10	10	0	5	15	10	0	0	0	0
352	301	FEYEN ZYLSTRA LLC, Grand Rapids, Mich.	E	49.6	44.9	30	40	0	0	2	17	0	0	0	11	0
353	343	MCDADE-WOODCOCK INC., Albuquerque, N.M.	E	49.6	13.8	5	0	0	0	75	0	0	0	0	5	0
354	402	FLY & FORM INC., Atlanta, Ga.	C	49.5	61.2	100	0	0	0	0	0	0	0	0	0	0
355	328	MID-CITY ELECTRIC/TECHNOLOGIES, Columbus, Ohio <sup>355</sup>	E	48.8	21.0	100	0	0	0	0	0	0	0	0	0	0
356	**	OTTO BAUM CO. INC., Morton, Ill.	MA/C	48.2	49.9	53	12	0	0	0	10	25	0	0	0	0
357	323	TRI-STATE DRILLING INC., Hamel, Minn. <sup>357</sup>	X	48.2	43.1	1	0	0	0	0	0	0	0	0	0	0
358	370	WYATT INC., Pittsburgh, Pa. <sup>358</sup>	W/O	48.0	40.5	100	0	0	0	0	0	0	0	0	0	0
359	392	FLAGGER FORCE - TRAFFIC CONTROL SERVICES, Hummelstown, Pa. <sup>359</sup>	O	47.9	47.9	0	0	45	0	0	0	20	0	35	0	0
360	316	POYNTER SHEET METAL, Greenwood, Ind.	SH	47.9	41.6	45	20	5	0	10	20	0	0	0	0	0
361	385	PHILIPS BROS. ELECTRICAL CONTRACTORS INC., Glenmoore, Pa.	E	47.8	23.3	50	10	5	10	10	5	10	0	0	0	0
362	359	THE DIGESARE GROUP, Schenectady, N.Y.	M	47.5	48.2	50	25	0	0	0	25	0	0	0	0	0
363	290	ALAKA'I MECHANICAL CORP., Honolulu, Hawaii	M	47.3	66.3	100	0	0	0	0	0	0	0	0	0	0
364	**	MENARD USA, Carnegie, Pa.	X	47.1	80.0	35	10	0	10	0	5	40	0	0	0	0
365	389	BARNUM & CELILLO ELECTRIC INC., Sacramento, Calif.	E	47.0	38.0	60	0	0	0	0	0	0	0	0	0	0
366	379	MEISNER ELECTRIC INC., Delray Beach, Fla.	E	46.6	58.1	95	2	0	0	0	0	1	0	2	0	0
367	350	MBR CONSTRUCTION SERVICES INC., Reading, Pa.	E/M	46.5	55.0	40	10	20	0	30	0	0	0	0	0	0
368	**	HALEY-GREER INC., Dallas, Texas	G	46.5	47.0	100	0	0	0	0	0	0	0	0	0	0
369	**	AIR MASTERS CORP., St. Louis, Mo. <sup>369</sup>	M/SH	46.0	34.9	90	5	0	0	0	5	0	0	0	0	0
370	411	KPOST CO., Dallas, Texas	R	45.9	38.4	100	0	0	0	0	0	0	0	0	0	0
371	401	SHAW ELECTRIC CO., Southfield, Mich.	E	45.9	78.6	42	0	5	0	15	3	0	0	34	0	0
372	**	UNITED MECHANICAL, Dallas, Texas	M	45.8	47.0	20	35	0	0	0	25	0	0	20	0	0
373	453	HARDROCK CONCRETE PLACEMENT CO. INC., Phoenix, Ariz.	C	45.6	40.8	100	0	0	0	0	0	0	0	0	0	0
374	368	THE BULLDOG GROUP INC., Winston-Salem, N.C.	R	45.2	47.9	85	15	0	0	0	0	0	0	0	0	0
375	321	GSL ELECTRIC, Sandy, Utah	E	45.1	77.6	50	15	0	0	0	25	0	0	10	0	0
376	373	APG ELECTRIC INC., Clearwater, Fla.	E	45.0	29.4	90	5	0	0	0	0	0	0	5	0	0
377	268	BEARD CONSTRUCTION GROUP LLC, Port Allen, La.	X	45.0	46.0	0	0	1	0	0	89	10	0	0	0	0
378	312	THOMAS INDUSTRIAL COATINGS INC., Pevely, Mo.	P	44.8	41.2	2	4	10	14	15	25	30	0	0	0	0
379	**	ALLIANCE GLAZING TECHNOLOGIES, Romeoville, Ill.	G	44.3	81.0	100	0	0	0	0	0	0	0	0	0	0
380	264	DGC CAPITAL CONTRACTING CORP., Mt Vernon, N.Y.	M/E/W	44.0	42.0	100	0	0	0	0	0	0	0	0	0	0
381	**	WHITE ELECTRICAL CONSTRUCTION CO., Atlanta, Ga.	E	44.0	44.0	0	10	70	0	0	0	0	0	20	0	0
382	412	SUN VALLEY MASONRY INC., Phoenix, Ariz.	MA	43.6	43.6	100	0	0	0	0	0	0	0	0	0	0
383	418	CULLUM MECHANICAL CONSTRUCTION INC., North Charleston, S.C.	M	43.3	38.2	40	50	0	0	0	10	0	0	0	0	0
384	406	SWANSON & YOUNGDALE INC., Minneapolis, Minn.	P	43.2	38.4	63	2	8	0	2	24	1	0	0	0	0
385	394	PERLECTRIC INC., Fairfax, Va.	E	43.0	49.4	100	0	0	0	0	0	0	0	0	0	0
386	**	INTECH CONTRACTING INC., Lexington, Ky. <sup>386</sup>	P	42.5	23.8	4	0	0	0	0	0	96	0	0	0	0
387	485	DANNY'S CONSTRUCTION CO. LLC, Shakopee, Minn. <sup>387</sup>	ST	42.4	114.3	37	0	3	1	0	0	21	0	0	0	0
388	503	TERRY'S ELECTRIC INC., Kissimmee, Fla.	E	42.4	21.1	95	0	0	0	0	0	0	0	5	0	0
389	387	FLORENCE ELECTRIC LLC, Canton, Mass.	E	42.4	62.9	75	10	0	0	0	0	5	0	10	0	0
390	**	UTILITY CONTRACTORS INC. (DBA UCI), Wichita, Kan.	U/C	42.3	53.2	0	0	4	19	28	36	13	0	0	0	0

FOOTNOTES: 342=SUPPLY & INSTALL DOOR ASSEMBLIES; 346=HAZARDOUS WASTE; 348=RIGGING/CONVEYOR INSTALLATION; 350=SCAFFOLDING & INSULATION; 355=TELE DATA; 357=SHAFTS/SUBSTATION; 358=ARCHITECTURAL MILLWORK AND EXTERIOR PANEL SYSTEMS; 359=TRAFFIC CONTROL SERVICES; 369=RESIDENTIAL; 386=INDUSTRIAL; 387=BRIDGE RESTORATION, BRIDGE INSPECTION SUPPORT, STEEL FABRICATION; 387=SUBCONTRACTED ERECTION SERVICES

RANK 2015	RANK 2014	FIRM	FIRM TYPE	2014 REVENUE (\$ MIL)		MARKETS (% OF 2014 REVENUE)								
				TOTAL REVENUE	NEW CONTRACTS	GENERAL BUILDING	MANUFACTURING	POWER	WATER SUPPLY	SEWER / WASTE	INDUS. / PETROLEUM	TRANSPORTATION	HAZARDOUS WASTE	TELECOM
391	505	CB STRUCTURES INC., Pompano Beach, Fla.	C/MA	42.0	28.0	100	0	0	0	0	0	0	0	0
392	**	WESTERN ALLIED CORP., Santa Fe Springs, Calif.	M	42.0	38.9	90	5	0	0	0	5	0	0	0
393	567	AREA ERECTORS INC., Rockford, Ill.	ST	41.9	45.6	85	10	0	0	5	0	0	0	0
394	419	CENTRAL CEILINGS INC., South Easton, Mass.	W	41.9	24.6	100	0	0	0	0	0	0	0	0
395	454	TJ WIES CONTRACTING INC., Lake St. Louis, Mo.	W	41.5	63.3	100	0	0	0	0	0	0	0	0
396	414	PETILLO INC., Flanders, N.J.	X/C	40.8	43.9	60	0	0	10	20	0	5	5	0
397	380	KOONTZ ELECTRIC CO. INC., Morrilton, Ark.	E	40.4	34.0	0	5	75	5	0	5	10	0	0
398	409	INTERNATIONAL CHIMNEY CORP., Buffalo, N.Y.	C/MA/D	40.2	40.0	7	5	36	5	3	32	2	5	5
399	470	ACS SYSTEM ASSOCIATES, Mt. Vernon, N.Y.	M	40.0	100.0	100	0	0	0	0	0	0	0	0
400	365	HACI MECHANICAL CONTRACTORS INC., Phoenix, Ariz.	M	40.0	44.5	95	0	0	0	0	0	5	0	0
401	441	TRUESDELL CORP., Tempe, Ariz.	C	39.8	50.1	30	0	0	0	0	0	70	0	0
402	405	PRECISION ENVIRONMENTAL CO., Independence, Ohio	A	39.7	52.2	0	0	0	0	0	0	0	100	0
403	399	SUPERIOR RIGGING & ERECTING CO. INC., Atlanta, Ga. <sup>403</sup>	ST/O	39.5	28.3	70	10	0	0	0	10	10	0	0
404	336	IMCOR, Phoenix, Ariz.	M/SH	39.0	NA	80	6	0	0	4	0	10	0	0
405	424	KING OF TEXAS ROOFING CO. LP, Grand Prairie, Texas	R	39.0	41.3	90	10	0	0	0	0	0	0	0
406	423	CONCRETE STRUCTURES OF THE MIDWEST INC., Chicago, Ill.	C	38.3	36.2	86	0	0	0	0	0	14	0	0
407	404	NORTH AMERICAN DISMANTLING CORP., Lapeer, Mich.	D	38.0	41.1	8	16	55	0	0	10	1	10	0
408	408	SOWLES CO., Shakopee, Minn. <sup>408</sup>	ST	37.7	37.7	60	30	0	0	0	0	10	0	0
409	363	C.A. LINDMAN COS., Jessup, Md. <sup>409</sup>	MA	37.5	40.2	95	0	0	5	0	0	0	0	0
410	467	WEIFIELD GROUP CONTRACTING, Denver, Colo.	E	37.4	58.5	85	5	0	0	5	0	0	0	5
411	471	ACOUSTIC CEILING AND PARTITION CO., Ann Arbor, Mich.	W	37.2	31.9	92	5	3	0	0	0	0	0	0
412	428	UNISTRUT CONSTRUCTION, Addison, Ill.	ST	37.1	42.8	100	0	0	0	0	0	0	0	0
413	**	ASSOCIATED MECHANICAL CONTRACTORS INC., Shakopee, Minn.	M	37.1	44.2	100	0	0	0	0	0	0	0	0
414	488	SHORELINE FOUNDATION INC., West Park, Fla.	X	37.1	42.2	0	0	0	40	0	0	60	0	0
415	398	AVALOTIS CORP., Verona, Pa.	P	37.0	45.0	0	0	30	0	0	10	60	0	0
416	427	A&R MECHANICAL CONTRACTORS INC., Urbana, Ill.	M/SH	36.9	52.3	84	10	0	0	3	0	3	0	0
417	520	ARC ABATEMENT, Waco, Texas	A	36.3	39.7	0	0	0	0	0	0	0	100	0
418	420	DEE CRAMER INC., Holly, Mich.	SH	36.1	53.0	65	25	0	0	10	0	0	0	0
419	524	B&B ELECTRICAL CONTRACTORS INC., Iron Mountain, Mich.	E	35.9	40.5	0	0	5	0	0	65	0	0	0
420	469	UPCHURCH PLUMBING INC., Greenwood, Miss.	M	35.9	46.4	43	49	0	0	0	8	0	0	0
421	403	KOVACH BUILDING ENCLOSURES, Chandler, Ariz.	G/SH	35.4	67.1	100	0	0	0	0	0	0	0	0
422	356	PREMIER ELECTRICAL CORP., Brooklyn Park, Minn.	E	35.4	42.0	30	0	5	5	20	10	20	0	10
423	501	ROOFING SOLUTIONS, Prairieville, La.	R/SH	35.0	37.1	95	0	0	0	0	5	0	0	0
424	448	ORNDORFF & SPAID INC., Beltsville, Md.	R	34.9	33.5	81	10	0	0	0	9	0	0	0
425	433	HARTMAN WALSH INDUSTRIAL SERVICES, St. Louis, Mo.	P	34.9	NA	5	5	20	20	0	25	20	5	0
426	457	NICKLE ELECTRICAL COS., Newark, Del.	E	34.9	23.0	80	10	0	0	0	0	0	0	10
427	447	GRIBBINS INSULATION, Evansville, Ind. <sup>427</sup>	O	34.9	28.0	10	5	50	0	0	35	0	0	0
428	358	SUNWEST ELECTRIC INC., Anaheim, Calif.	E	34.8	28.5	100	0	0	0	0	0	0	0	0
429	386	ACE ELECTRIC INC., Valdosta, Ga.	E	34.7	27.9	70	0	0	0	0	24	6	0	0
430	391	BUESING CORP., Phoenix, Ariz. <sup>430</sup>	X/O	34.7	27.4	73	0	0	0	8	0	7	0	0
431	364	TOWER GLASS, Santee, Calif.	G	34.5	32.0	99	0	0	0	1	0	0	0	0
432	489	APEX IMAGING SERVICES, Pomona, Calif.	W/P	34.5	40.0	100	0	0	0	0	0	0	0	0
433	500	DEE BROWN INC., Dallas, Texas	MA	34.4	67.3	100	0	0	0	0	0	0	0	0
434	**	FINROCK INDUSTRIES, Apopka, Fla.	C	34.4	34.8	100	0	0	0	0	0	0	0	0
435	437	JERRY THOMPSON & SONS PAINTING INC., San Rafael, Calif.	P	34.4	21.5	70	10	0	0	0	10	10	0	0
436	376	SHELLEY ELECTRIC INC., Wichita, Kan.	E	34.3	31.7	5	15	0	0	25	30	25	0	0
437	481	GREINER ELECTRIC LLC, Littleton, Colo.	E	34.0	70.3	95	2	1	0	0	1	0	0	1
438	366	ERSI, East Syracuse, N.Y.	D	33.8	40.0	30	10	0	0	0	40	0	20	0
439	436	JOHNSON AND JORDAN INC., Scarborough, Maine	M	33.7	29.8	90	0	0	0	0	10	0	0	0
440	506	TRINITY DRYWALL & PLASTERING SYSTEMS, Fort Worth, Texas	W	33.6	32.8	100	0	0	0	0	0	0	0	0

FOOTNOTES: 403=CRANE RENTAL & RIGGING; 408=TOWER CRANE; 409=WATERPROOFING; 427=MECHANICAL INSULATION; 430=SHORING; SHOTCRETE; SOLAR

HAYWARD BAKER on Oct. 13 acquired Ellington Cross LLC, a Charleston, S.C.-based geotechnical contractor.

FOOTNOTES: 444=STEEL FABRICATION; 440=GENERAL CONSTRUCTION & CONSTRUCTION MANAGEMENT; 455=THEATRICAL EQUIPMENT; 456=MAINTENANCE AND SERVICE; 460=DRILLING AND BLASTING; 463=MECHANICAL INSULATION; 468=ALL EXCEPT STEEL ERECTION & UTILITY FOR 100%; 486=STAFFING, DOCUMENTATION, TRAINING & OPERATIONS & MAINTENANCE

MARKETS (% OF 2014 REVENUE)

RANK 2015	RANK 2014	FIRM	FIRM TYPE	2014 REVENUE (\$ MIL)		MARKETS (% OF 2014 REVENUE)								
				TOTAL REVENUE	NEW CONTRACTS	GENERAL BUILDING	MANUFACTURING	POWER	WATER SUPPLY	SEWER / WASTE	INDUS. / PETROLEUM	TRANSPORTATION	HAZARDOUS WASTE	TELECOM
441	413	ASCHER BROTHERS CO. INC., Chicago, Ill.	P	33.2	33.2	100	0	0	0	0	0	0	0	0
442	430	ASCHINGER ELECTRIC CO., Fenton, Mo.	E	33.2	42.2	45	20	0	0	0	15	10	0	10
443	**	DURR HEAVY CONSTRUCTION, Harahan, La.	X/D	33.0	35.8	70	0	0	0	0	0	30	0	0
444	450	K&K IRON WORKS INC., McCook, Ill. 444	ST/O	33.0	35.0	60	10	0	0	10	10	10	0	0
445	431	ACTION ELECTRIC CO. INC., Atlanta, Ga.	E/M	33.0	34.1	4	70	5	0	0	20	0	0	1
446	442	UNITED RIGGERS AND ERECTORS INC., Walnut, Calif.	M/ST	32.7	22.2	10	20	10	0	20	40	0	0	0
447	**	ROMMEL CRANSTON CONSTRUCTION, Linticum, Md.	M	32.6	33.8	100	0	0	0	0	0	0	0	0
448	417	AJAY GLASS & MIRROR CO. INC., Canandaigua, N.Y.	G	32.6	40.0	100	0	0	0	0	0	0	0	0
449	381	THOMARIOS, Akron, Ohio 449	P/O	32.3	39.2	84	0	14	0	1	0	2	0	0
450	446	H.R. ALLEN INC., Charleston, S.C.	E	32.3	26.0	80	10	0	0	0	10	0	0	0
451	564	SPACECON SPECIALTY CONTRACTORS LLC, Colorado Springs, Colo.	W	32.2	26.5	100	0	0	0	0	0	0	0	0
452	**	KIMMINS CONTRACTING CORP., Tampa, Fla.	U	32.2	40.2	30	0	0	40	10	0	20	0	0
453	**	NOVA HOTEL RENOVATION & CONSTRUCTION LLC, Clearwater, Calif.	MA	32.2	29.1	100	0	0	0	0	0	0	0	0
454	512	NABCO MECHANICAL & ELECTRICAL INC., Conway, Ark.	M/E	31.8	33.6	100	0	0	0	0	0	0	0	0
455	463	TEXAS SCENIC, San Antonio, Texas 455	O	31.8	29.2	0	0	0	0	0	0	0	0	0
456	528	W B GUIMARIN AND CO., Columbia, S.C. 456	M	30.7	22.5	60	25	0	0	0	0	15	0	0
457	459	BRIGGS ELECTRIC INC., Tustin, Calif.	E	30.6	18.0	75	15	0	0	0	0	0	0	10
458	460	O'ROURKE WRECKING CO., Cincinnati, Ohio	D	30.6	35.8	20	25	10	0	0	30	10	5	0
459	465	WALDROP MECHANICAL SERVICES, Spartanburg, S.C.	M	30.4	17.9	80	10	0	0	0	10	0	0	0
460	482	HOOVER CONSTRUCTION, Virginia, Minn. 460	X/O	30.0	26.6	0	0	10	0	0	80	10	0	0
461	444	LONG PAINTING CO., Kent, Wash.	P	29.8	28.4	24	15	10	11	12	13	10	5	0
462	546	THE HOLBROOK CO. INC., Grand Prairie, Texas	X	29.8	32.4	80	7	0	0	0	0	13	0	0
463	511	LUSE THERMAL TECHNOLOGIES LLC, Aurora, Ill. 463	O	29.6	32.0	20	0	5	3	8	36	0	28	0
464	499	DEL MONTE ELECTRIC, Dublin, Calif.	E	29.6	22.1	70	0	30	0	0	0	0	0	0
465	487	CSE INC., Madison Heights, Va.	ST	29.5	24.6	45	15	10	0	0	30	0	0	0
466	443	HELLER ELECTRIC CO. INC., Brandywine, Md.	E	29.2	19.6	97	0	0	0	0	0	3	0	0
467	508	CENTERLINE UTILITIES INC., Palm City, Fla.	U	29.2	35.0	0	0	0	33	67	0	0	0	0
468	475	MIDWEST STEEL CO. INC., Houston, Texas	D	29.1	27.5	0	0	0	0	0	100	0	0	0
469	449	JOHN J. CAMPBELL ROOFING, Memphis, Tenn.	R	29.0	31.0	80	15	0	0	0	5	0	0	0
470	462	ACME ELECTRIC, Lubbock, Texas	E	28.9	44.0	60	0	0	0	40	0	0	0	0
471	504	BECKSTROM ELECTRIC, Purcellville, Va.	E	28.8	19.6	100	0	0	0	0	0	0	0	0
472	**	KASSELMAN ELECTRIC CO. INC., Albany, N.Y.	E	28.8	20.0	60	10	0	0	0	5	5	0	20
473	472	EVANS ROOFING CO. INC., Elmira, N.Y.	R	28.8	26.5	20	20	0	0	0	35	0	0	0
474	515	MAYERS ELECTRIC CO. INC., Cincinnati, Ohio	E	28.6	22.4	35	26	7	0	0	29	0	0	3
475	493	CANTERA CONCRETE CO. LLC, Tulsa, Okla.	C	28.6	40.2	90	5	0	0	0	5	0	0	0
476	535	SIERRA PACIFIC WEST INC., Vista, Calif.	X/D	28.3	14.8	40	0	0	0	0	0	60	0	0
477	434	B. FRANK JOY, Hyattsville, Md.	U	28.2	26.9	84	0	0	0	15	0	0	0	1
478	425	TARLTON AND SON INC., Fresno, Calif.	W/MA	28.0	35.3	95	0	0	5	0	0	0	0	0
479	461	W.D. MANOR MECHANICAL CONTRACTORS INC., Phoenix, Ariz.	M/SH	28.0	20.0	0	20	0	0	0	0	0	0	0
480	**	O.C. McDONALD CO. INC., San Jose, Calif.	M	28.0	36.0	80	20	0	0	0	0	0	0	0
481	**	A & B MECHANICAL CONTRACTORS INC., Salt Lake City, Utah	M	27.9	24.7	48	0	0	0	0	0	0	0	0
482	455	CROCKETT FACILITIES SERVICES, Bowie, Md.	M	27.8	24.8	100	0	0	0	0	0	0	0	0
483	474	ADRIAN L. MERTON INC., Capitol Heights, Md.	M	27.7	40.0	100	0	0	0	0	0	0	0	0
484	492	WAYNE'S ROOFING INC., Sumner, Wash.	R	27.7	27.4	90	10	0	0	0	0	0	0	0
485	476	MARR SCAFFOLDING CO., South Boston, Mass. 485	O	27.6	18.5	0	0	0	0	0	0	0	0	0
486	396	PIC GROUP INC., Atlanta, Ga. 486	O/M	27.5	94.4	0	0	100	0	0	0	0	0	0
487	416	CENTURY STEEL ERECTORS CO. LP, Dravosburg, Pa.	ST	27.4	22.0	64	0	0	0	0	8	27	2	0
488	468	MILLER BONDED INC., Albuquerque, N.M.	M/SH	27.4	19.1	100	0	0	0	0	0	0	0	0
489	531	QUALITY INTERIORS INC., Indianapolis, Ind.	W	27.2	17.0	95	5	0	0	0	0	0	0	0
490	491	GIROUX GLASS, Los Angeles, Calif.	G	27.1	29.1	100	0	0	0	0	0	0	0	0

RANK 2015	2014	FIRM	FIRM TYPE	2014 REVENUE (\$ MIL)		MARKETS (% OF 2014 REVENUE)								
				TOTAL REVENUE	NEW CONTRACTS	GENERAL BUILDING	MANUFACTURING	POWER	WATER SUPPLY	SEWER / WASTE	INDUS. / PETROLEUM	TRANSPORTATION	HAZARDOUS WASTE	TELECOM
491	**	THE PIPCO COS. LTD., Peoria, Ill.	M/F	26.9	28.8	40	20	0	15	0	25	0	0	0
492	466	SCHETTER ELECTRIC, Sacramento, Calif.	E	26.9	44.9	57	35	0	0	0	0	0	0	8
493	351	GARDNER ZEMKE CO., Albuquerque, N.M.	E/M	26.9	21.0	60	0	11	0	0	1	22	0	0
494	533	GEORGE E. MASKER INC., Oakland, Calif.	P	26.8	28.4	90	0	0	0	0	0	10	0	0
495	553	CLEARY CONSTRUCTION INC., Tompkinsville, Ky.	U	26.5	27.0	0	0	0	49	51	0	0	0	0
496	439	GRIFFIN DEWATERING CORP., Houston, Texas <sup>496</sup>	O	26.4	NA	40	0	0	40	20	0	0	0	0
497	349	CORBINS ELECTRIC, Phoenix, Ariz.	E	26.1	27.2	44	22	6	0	0	0	27	0	0
498	543	PIEDMONT MECHANICAL INC., Spartanburg, S.C.	M/SH	26.0	28.3	0	100	0	0	0	0	0	0	0
499	517	PATRIOT ERECTORS INC., Dripping Springs, Texas	ST	26.0	19.3	68	0	0	0	0	32	0	0	0
500	526	MID ATLANTIC MECHANICAL, Broomall, Pa.	M	25.9	19.0	95	0	0	0	5	0	0	0	0
501	497	RHP MECHANICAL, Reno, Nev.	M	25.7	16.6	40	30	0	0	0	30	0	0	0
502	**	VENUS CONSTRUCTION, Mansfield, Texas	U	25.5	26.5	70	25	0	0	0	0	5	0	0
503	393	D.W. NICHOLSON CORP., Hayward, Calif. <sup>503</sup>	M/E	25.4	39.4	10	15	0	0	10	15	50	0	0
504	496	ALLSOUTH SUBCONTRACTORS, Birmingham, Ala.	R	25.4	NA	85	15	0	0	0	0	0	0	0
505	495	TECHNO WEST INC., Anaheim, Calif.	P	25.2	24.7	25	5	5	10	10	5	40	0	0
506	525	PRISM RESPONSE INC., Export, Pa.	A	25.1	20.0	20	0	0	0	0	20	0	60	0
507	514	ENVIRONMENTAL HOLDINGS GROUP LLC, Morrisville, N.C.	A/D	25.1	38.4	30	10	0	0	0	20	0	40	0
508	556	MAS BUILDING & BRIDGE INC., Norfolk, Mass. <sup>508</sup>	O/ST	25.1	13.0	44	0	0	0	0	0	56	0	0
509	534	LEI COS. INC., Denver, Colo.	E	25.0	25.0	100	0	0	0	0	0	0	0	0
510	**	M & D MECHANICAL CONTRACTORS INC., Decatur, Ala.	M	25.0	14.0	30	30	0	0	0	40	0	0	0
511	513	SPECIALTY FINISHES INC., Atlanta, Ga.	P	24.6	25.3	70	20	0	0	0	0	10	0	0
512	**	THE GEORGE D. ALAN CO., Irving, Texas <sup>512</sup>	O	24.5	27.0	75	10	0	0	0	5	10	0	0
513	490	LEGACY MECHANICAL INC., Denver, Colo.	M/SH	24.4	25.2	96	0	0	0	0	4	0	0	0
514	**	HIS CONSTRUCTORS INC., Indianapolis, Ind. <sup>514</sup>	O/X	24.4	45.0	10	0	0	10	0	10	20	50	0
515	558	DEMOLITION & ASBESTOS REMOVAL INC., Greensboro, N.C.	A	24.3	22.3	10	0	0	0	0	0	0	90	0
516	477	CERTIFIED COATINGS CO., Fairfield, Calif.	P	24.2	NA	0	3	10	0	5	15	67	0	0
517	537	FENTON, Cincinnati, Ohio <sup>517</sup>	O/ST	24.2	24.2	0	40	5	0	0	15	40	0	0
518	**	INTEX ELECTRICAL CONTRACTORS INC., Forney, Texas	E	24.2	14.2	100	0	0	0	0	0	0	0	0
519	456	JOHNSON-DAVIS INC., Lantana, Fla.	U	24.0	32.2	0	0	0	30	70	0	0	0	0
520	545	COMPREHENSIVE ENERGY SERVICES INC., Longwood, Fla.	M	23.9	19.9	85	5	0	0	0	10	0	0	0
521	539	IMS MASONRY INC., Lindon, Utah	MA	23.7	33.2	96	1	0	0	0	2	2	0	0
522	473	CENTURY MECHANICAL CONTRACTORS INC, Fort Worth, Texas	M	23.6	59.7	95	1	0	0	0	4	0	0	0
523	502	K&S AIR CONDITIONING INC., Orange, Calif.	M	23.5	23.5	100	0	0	0	0	0	0	0	0
524	**	WHEELER ELECTRIC INC., Idaho Falls, Idaho	E	23.4	24.7	33	19	13	1	1	28	4	0	1
525	544	COMMERCIAL ROOFERS INC., Las Vegas, Nev. <sup>525</sup>	R	23.1	23.1	100	0	0	0	0	0	0	0	0
526	**	SETPOINT SYSTEMS CORP., Littleton, Colo. <sup>526</sup>	O	23.0	14.4	65	0	0	0	0	0	0	0	0
527	561	LOUISIANA CHEMICAL DISMANTLING CO., Kenner, La.	D	22.9	19.7	0	0	0	0	0	100	0	0	0
528	532	BREAK THRU ENTERPRISES INC., Lombard, Ill.	D	22.7	21.7	100	0	0	0	0	0	0	0	0
529	**	MEI, Fargo, N.D.	E	22.3	NA	45	30	0	0	0	0	15	0	10
530	**	HARRISON CONTRACTING CO., Villa Rica, Ga. <sup>530</sup>	P	22.2	19.3	89	5	0	0	0	6	0	0	0
531	589	BEACON PIPING CO., Canton, Mass.	M	22.2	40.6	20	25	40	0	0	5	10	0	0
532	548	D.H. FUNK & SONS LLC, Columbia, Pa.	X/U	22.0	20.8	55	15	0	0	25	0	0	0	5
533	529	ROBINETTE DEMOLITION INC., Oakbrook Terrace, Ill. <sup>533</sup>	D	22.0	4.3	99	1	0	0	0	0	0	0	0
534	541	GRAYDAZE CONTRACTING INC., Alpharetta, Ga.	P	22.0	26.0	85	15	0	0	0	0	0	0	0
535	429	O.S. INTERIOR SYSTEMS INC., Houston, Texas <sup>535</sup>	W	21.8	21.8	100	0	0	0	0	0	0	0	0
536	415	HODESS CLEANROOM CONSTRUCTION, North Attleboro, Mass. <sup>536</sup>	O	21.7	40.2	25	75	0	0	0	0	0	0	0
537	530	FERNANDES MASONRY INC., New Bedford, Mass.	MA	21.7	24.1	60	10	0	10	0	20	0	0	0
538	486	GRAZZINI BROTHERS & CO., Eagan, Minn. <sup>538</sup>	O	21.6	34.1	95	3	0	0	0	0	3	0	0
539	452	NATIONAL ENCLOSURE CO. LLC, Ypsilanti, Mich.	G	21.6	1.5	100	0	0	0	0	0	0	0	0
540	**	J. CROMPTON ELECTRIC INC., West Palm Beach, Fla. <sup>540</sup>	O/E	21.4	30.1	23	0	0	0	0	0	0	0	77

FOOTNOTES: 496=DEWATERING; 503=PIPING; OVERHEAD DOOR; 506=BRIDGE/DAM; 512=WATERPROOFING; 514=ENVIRONMENTAL REMEDIATION; 517=RIGGING; 525=WATERPROOFING; 526=BUILDING SYSTEMS INTEGRATION; 530=GENERAL MAINTENANCE; 533=EMERGENCY RESPONSE; 535=DEMOUNTABLE PARTITIONS; 536=CLEANROOM CONSTRUCTION; 538=SPECIALTY CONTRACTOR; 540=TELECOMMUNICATIONS

RANK		FIRM	FIRM TYPE	2014 REVENUE (\$ MIL)		MARKETS (% OF 2014 REVENUE)								
2015	2014			TOTAL REVENUE	NEW CONTRACTS	GENERAL BUILDING	MANUFACTURING	POWER	WATER SUPPLY	SEWER / WASTE	INDUS. / PETROLEUM	TRANSPORTATION	HAZARDOUS WASTE	TELECOM.
541	**	HARGROVE ELECTRIC CO. INC., Dallas, Texas	E	21.4	14.2	55	10	5	0	0	20	0	0	10
542	458	IHP INDUSTRIAL INC., St. Joseph, Mo.	M	21.0	9.7	25	45	5	10	0	15	0	0	0
543	522	RAM ACOUSTICAL CORP., Beaver Falls, Pa.	W	21.0	16.2	100	0	0	0	0	0	0	0	0
544	509	JOHN SMITH MASONRY, St. Louis, Mo.	MA	21.0	21.0	80	5	5	0	4	6	0	0	0
545	484	MIDWEST SERVICE GROUP, St. Peters, Mo.	A	20.6	20.6	10	0	0	0	0	5	0	85	0
546	388	ERSHIGS INC., Bellingham, Wash.	M	20.2	58.8	0	5	43	0	2	25	0	25	0
547	510	R & R WINDOW CONTRACTORS INC., Easthampton, Mass.	G	20.0	25.3	100	0	0	0	0	0	0	0	0
548	478	R. BAKER & SON, Red Bank, N.J.	D	20.0	27.0	2	15	15	1	10	52	1	3	1
549	**	METRO MECHANICAL INC., Bolton, Miss.	M	20.0	22.5	100	0	0	0	0	0	0	0	0
550	421	CIRCLE B CONSTRUCTION SYSTEMS LLC, Indianapolis, Ind. <sup>550</sup>	W	19.9	17.7	100	0	0	0	0	0	0	0	0
551	521	PYRAMID MASONRY CONTRACTORS INC., Decatur, Ga.	MA	19.9	17.8	63	34	0	0	0	0	3	0	0
552	570	ABSCOPE ENVIRONMENTAL INC., Canastota, N.Y. <sup>552</sup>	O/A	19.8	14.3	10	10	5	0	20	40	2	10	3
553	566	THE WITMER GROUP, Mount Joy, Pa. <sup>553</sup>	MA	19.7	26.6	100	0	0	0	0	0	0	0	0
554	**	ALL AREA PLUMBING INC., Covina, Calif.	M	19.7	25.2	75	0	0	0	0	0	25	0	0
555	480	EVERGREEN ARCHITECTURAL ARTS, New York, N.Y.	W/P	19.4	26.5	100	0	0	0	0	0	0	0	0
556	440	SHIELDS INC., Winston Salem, N.C. <sup>556</sup>	W	19.2	20.8	100	0	0	0	0	0	0	0	0
557	**	BUILDING SERVICE INC., Waukesha, Wis.	W	19.2	20.5	100	0	0	0	0	0	0	0	0
558	572	VULCAN PAINTERS INC., Bessemer, Ala.	P	19.0	19.3	2	1	17	1	65	2	7	0	0
559	**	JD TRADITIONAL INTERIORS, Huntington Station, N.Y.	W	18.9	14.0	98	0	0	0	0	0	2	0	0
560	451	MILLER DRUCK SPECIALTY CONTRACTING INC., New York, N.Y. <sup>560</sup>	O	18.8	22.4	79	0	0	0	0	0	21	0	0

FOOTNOTES: 550—FIRE PROOFING; 552—ENVIRONMENTAL REMEDIATION; 553—CAULKING / WATERPROOFING; 556—FLOORING; 560—STONE & TILE



RANK 2015	RANK 2014	FIRM	FIRM TYPE	2014 REVENUE (\$ MIL)		MARKETS (% OF 2014 REVENUE)								
				TOTAL REVENUE	NEW CONTRACTS	GENERAL BUILDING	MANUFACTURING	POWER	WATER SUPPLY	SEWER / WASTE	INDUS. / PETROLEUM	TRANSPORTATION	HAZARDOUS WASTE	TELECOM.
561	581	<b>ALLSTATE TOWER INC.</b> , Henderson, Ky. <sup>561</sup>	O/P	18.5	17.3	0	0	0	0	0	10	0	0	90
562	479	<b>CLEVELAND WRECKING CO.</b> , Covina, Calif.	D	18.5	7.7	69	0	0	0	0	0	26	5	0
563	519	<b>KEARNEY ELECTRIC INC.</b> , Phoenix, Ariz.	E	18.5	12.5	40	10	0	0	0	0	0	0	50
564	**	<b>LEGACY BUILDING SOLUTIONS</b> , South Haven, Minn.	R/ST	18.2	17.9	0	50	5	0	10	5	10	0	0
565	557	<b>BRODIE CONTRACTORS INC</b> , Raleigh, N.C.	MA	18.0	18.0	100	0	0	0	0	0	0	0	0
566	573	<b>BAKER PAINT &amp; CONTRACTING CO. INC.</b> , Tucker, Ga.	P	18.0	18.0	95	5	0	0	0	0	0	0	0
567	516	<b>ATS DRILLING INC.</b> , Fort Worth, Texas	X	17.9	25.1	10	0	0	0	0	0	90	0	0
568	597	<b>GROSS MECHANICAL CONTRACTORS INC.</b> , St. Louis, Mo.	M	17.7	18.0	0	10	5	0	10	75	0	0	0
569	574	<b>HAMPSHIRE FIRE PROTECTION CO.</b> , Londonderry, N.H.	F	17.5	10.1	100	0	0	0	0	0	0	0	0
570	**	<b>CRAWFORD-TRACEY CORP.</b> , Deerfield Beach, Fla.	G	17.3	19.3	100	0	0	0	0	0	0	0	0
571	**	<b>MSL ELECTRIC INC.</b> , Anaheim, Calif.	E	17.2	24.5	0	0	0	0	0	0	100	0	0
572	483	<b>PERRECA ELECTRIC CO. INC.</b> , Newburgh, N.Y.	E	17.2	21.5	15	10	0	0	0	60	5	0	10
573	579	<b>IACOBONI SITE SPECIALISTS INC.</b> , Baltimore, Md. <sup>573</sup>	U	16.5	18.5	100	0	0	0	0	0	0	0	0
574	571	<b>INSERV</b> , Fuquay-Varina, N.C.	M/E	16.5	17.8	0	100	0	0	0	0	0	0	0
575	585	<b>ENVIRONMENTAL ASSURANCE CO. INC.</b> , Indianapolis, Ind.	A	16.5	16.5	0	0	0	0	0	0	0	100	0
576	569	<b>INSULATION SPECIALTIES INC.</b> , Hopewell, Va. <sup>576</sup>	O/A	16.5	10.7	6	0	55	0	0	3	0	36	0
577	**	<b>ACKERMAN PLUMBING INC.</b> , Sarasota, Fla.	M	16.3	24.4	96	0	0	0	4	0	0	0	0
578	559	<b>COATINGS UNLIMITED INC.</b> , St. Louis, Mo.	P	16.3	7.2	0	30	10	30	0	30	0	0	0
579	588	<b>CONCRETE CUTTING &amp; BREAKING CO.</b> , Kentwood, Mich.	D	16.2	16.2	25	5	5	5	5	5	50	0	0
580	577	<b>HIGH LIGHT ELECTRIC INC.</b> , Riverside, Calif.	E	16.1	15.7	0	0	27	0	0	0	73	0	0

FOOTNOTES: <sup>561</sup>=TOWER MAINTENANCE; <sup>573</sup>=PAVING; <sup>576</sup>=INSULATION, SCAFFOLDING

**ENR is always a click away.**





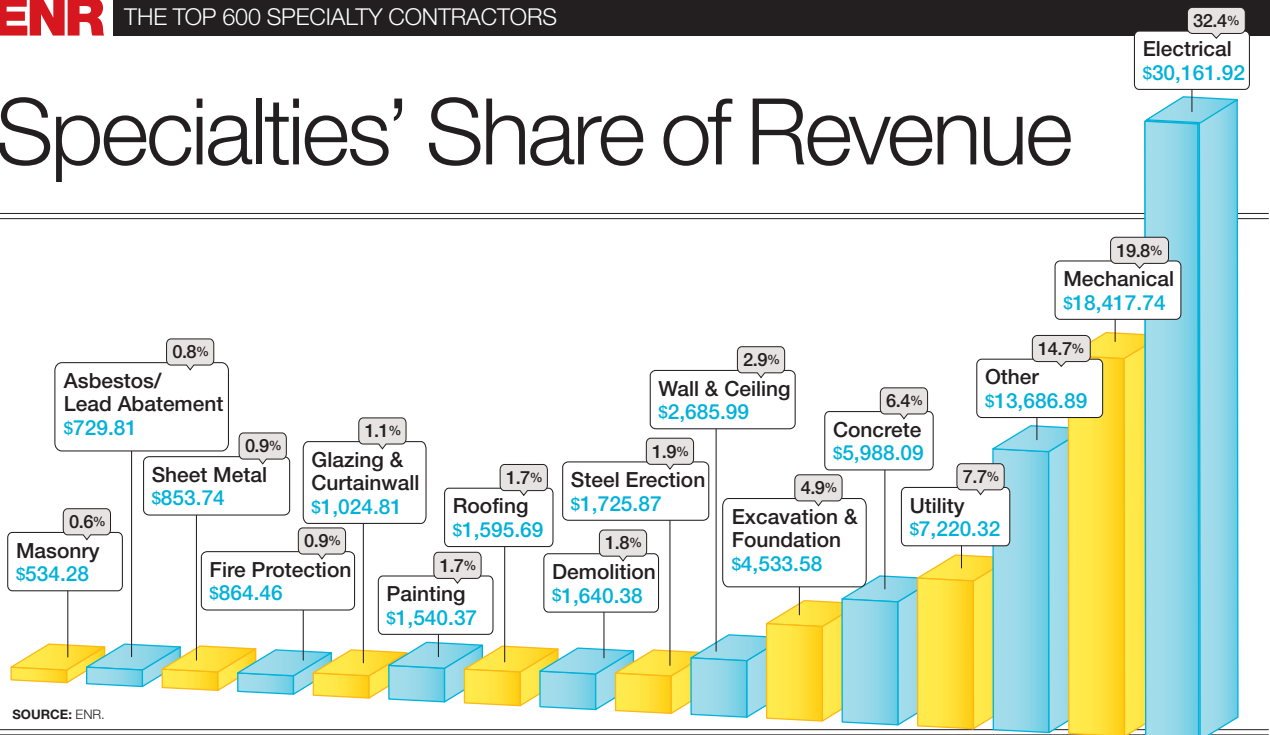
**MORROW-MEADOWS CORP.**

on Sept. 22 announced that it was acquiring R.E. Wall, a Tustin, Calif., engineering firm.

RANK 2015	RANK 2014	FIRM	FIRM TYPE	2014 REVENUE (\$ MIL)		MARKETS (% OF 2014 REVENUE)										
				TOTAL REVENUE	NEW CONTRACTS	GENERAL BUILDING	MANUFACTURING	POWER	WATER SUPPLY	SEWER / WASTE	INDUS. / PETROLEUM	TRANSPORTATION	HAZARDOUS WASTE	TELECOM.		
581	575	MASONRY BUILDERS INC, Tampa, Fla.	MA	16.1	18.2	98	1	1	0	0	0	0	0	0	0	0
582	583	MCINNIS ELECTRIC CO., Byram, Miss.	E	16.1	14.0	48	9	7	0	3	5	22	0	0	6	
583	590	BENISE DOWLING & ASSOCIATES INC., Decatur, Ga. <sup>583</sup>	P/O	16.0	17.5	55	0	0	0	0	5	40	0	0	0	
584	596	APS FIRE, Broken Arrow, Okla.	F	15.7	19.1	40	20	5	0	0	15	0	0	20	0	
585	137	WINTER ENVIRONMENTAL, DIV. OF THE WINTER CONSTRUCTION CO., Norcross, Ga.	A	15.5	15.5	7	10	47	0	0	11	0	25	0	0	
586	584	HAMLIN ROOFING CO. INC., Garner, N.C.	R	15.4	17.5	100	0	0	0	0	0	0	0	0	0	
587	**	WALSH ELECTRICAL CONTRACTING INC., Staten Island, N.Y.	E	15.3	32.0	100	0	0	0	0	0	0	0	0	0	
588	565	EARTH SERVICES & ABATEMENT (ESA) INC., Commerce City, Colo.	A	15.1	15.1	10	0	0	0	0	20	10	60	0	0	
589	**	BISCAYNE ROOFING AND WATERPROOFING SYSTEMS, Fort Lauderdale, Fla. <sup>589</sup>	O/R	15.0	15.0	100	0	0	0	0	0	0	0	0	0	
590	**	ROYAL BRIDGE INC., Palm Harbor, Fla.	P	15.0	24.8	0	0	0	60	0	0	40	0	0	0	
591	578	SHADROCK AND WILLIAMS MASONRY LTD., Helotes, Texas	MA	14.9	16.6	85	0	0	0	0	0	15	0	0	0	
592	586	FIVE ARROWS INC. DBA SERVICE PAINTING CORP, Tampa, Fla.	P	14.8	17.5	59	9	0	2	10	0	3	0	0	0	
593	**	MERIT ELECTRIC CO. INC., Largo, Fla.	E	14.7	11.5	100	0	0	0	0	0	0	0	0	0	
594	547	W.J. MALONEY PLUMBING CO. INC., Phoenix, Ariz.	M	14.6	7.6	20	0	0	0	0	0	10	0	70	0	
595	555	THE ROCKWELL GROUP INC., Freeport, Ill.	W	14.5	16.5	100	0	0	0	0	0	0	0	0	0	
596	**	RONSCO INC., New York, N.Y.	W	14.1	16.0	100	0	0	0	0	0	0	0	0	0	
597	**	D&D ROOFING AND SHEET METAL INC., Sparks, Nev.	R	13.8	14.5	50	20	0	0	0	20	10	0	0	0	
598	540	ALL STATE CONSTRUCTION INC., Farmington, Conn. <sup>598</sup>	M	13.7	11.3	4	7	30	8	1	50	0	0	0	0	
599	593	INTERIOR TECHNOLOGY, Portland, Wash. <sup>599</sup>	O	12.7	16.5	85	10	0	0	0	5	0	0	0	0	
600	**	TITUS CONSTRUCTION GROUP, Fort Lauderdale, Fla.	W	12.6	16.5	100	0	0	0	0	0	0	0	0	0	

FOOTNOTES: 583=POWDER COATING; 589=WATERPROOFING; 598=GENERAL CONSTRUCTION; 599= FIRE/SMOKE PARTITIONS, ACOUSTICS, SPACE DIVISION, GLASS, DAYLIGHTING, SECURITY

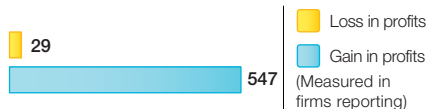
# Specialties' Share of Revenue



SOURCE: ENR.

## The Top 600 Specialty Contractors' Profitability

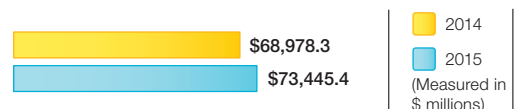
SOURCE: ENR.



Loss in profits  
Gain in profits  
(Measured in firms reporting)

## The Top 600 Specialty Contractors' New Contracts

SOURCE: ENR.



2014  
2015  
(Measured in \$ millions)

The market for subcontractors and specialty-trade contractors has been slowly improving for the past five years. During the uphill climb, many contractors wondered when things would get back to normal. That day has arrived. Not all markets or conditions are ideal, but the market is strong, and most firms no longer have to worry about the bottom falling out of their business.

The scope of the recovery can be seen in the results of this year's ENR Top 600 Specialty Contractors list. As a group, the Top 600 cleared revenue of \$93.20 billion in 2014, up 5.6%, from \$88.13 billion, in 2013. The Top 600 revenue figure from 2014 is a record and well ahead 2008's mark of \$87.07 billion—before the great recession began.

Part of the growth can be attributed to acquisitions by the large firms at the top of the list. For example, Quanta Services, the No. 1 firm on the list, acquired nine firms in 2014, including Canada's Banister Pipelines, which Quanta anticipates will generate as much as \$350 million in revenue in 2015.

Another large firm on the acquisition trail was Safway Group. It acquired Canadian insulation contractor Nel-Tekk in 2014 and recently acquired painting giant Mobley Industrial Services, which Safway says is the largest independently owned coatings company in the U.S. "The acquisition of proven performers like Mobley Industrial Services in the Gulf region and Nel-Tekk in



**"The market is growing, but with all the turmoil in the world, there could be an abrupt shift. I think we have all learned to live with that possibility."**

Anthony Guzzi, CEO, EMCOR Group

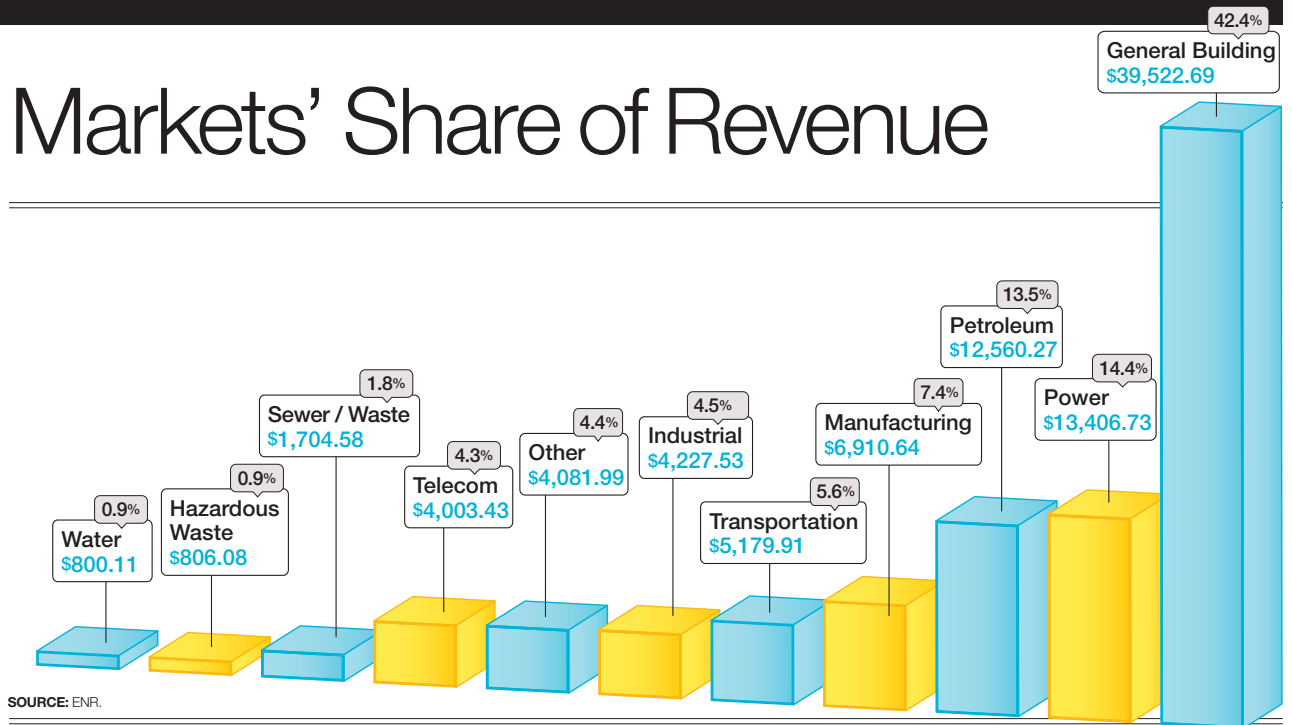
Ontario has helped to round out Safway's multiservice expertise and elevate our leadership in the industry," says Bill Hayes, Safway's CEO.

It is not just the big firms that are making acquisitions. For example, last December, O'Connell Electric Co. acquired Clifford R. Gray, a union electrical and communications contractor based in Schenectady, N.Y. "O'Connell has been strategically positioning [itself] in the industry to increase [its] overall company sales to a quarter-billion dollars over the next several years," says Victor Salerno, O'Connell's CEO.

However, not all firms are in a hurry to grow through acquisition. "We are always looking for good firms that could provide value to us, but we prefer to grow organically," says Anthony Guzzi, CEO of EMCOR Group. He sees EMCOR growing internally in this market at a solid but single-digit pace.

However, Guzzi warns that contractors should always be prepared for a sudden shift in fortunes. "The market is growing, but with all the turmoil in the world, there could be an abrupt shift. I think we have all learned to live with that possibility," he says. Still, he does not believe the scale of problems that stemmed from the 2008 economic meltdown will revisit the market. "Who would have thought that we would [experience] a series of crises in the Middle East and the market here would remain unaffected?" he observes.

# Markets' Share of Revenue



SOURCE: ENR.

## Comparing the Past Decade's Specialty-Contractor Revenue



Measured in \$ billions  
Source: ENR.

Many firms believe the market for subcontractors will remain strong for at least another year. Robert V. Barnes III, CEO of Dee Brown Inc., notes that general contractors have been loading up their backlogs for projects as far out as spring and summer 2017, providing an unusually long lead in buyout for the subcontractor. "We generally experience the time from award to install something more in the four- to six-month lead-time range, but that is now stretching out to 15 to 18 months," he says.

### Still Competitive

Despite the growing availability of work, competition remains intense. Over the past few years, contractors competed vigorously just to maintain their business. But now, "competition remains strong as companies regain their appetite for growth," says Joel Moryn, president of Parsons Electric.

Some contractors worry that some of their competitors may be overreaching. "There are many firms out there reaching for much higher volumes and larger single project awards that don't have the past history to support their claims," says Barnes.

Competition has caused many contractors to be careful about what they will bid on. "We spend a great deal of time talking about our risk-assessment tools and being vigilant from a pricing perspective. We're proud of the expertise we have and the value it can bring to a project.

## 525

Firms on the list that sent in a survey in 2014

## 68.2%

Firms that increased revenue in 2014 from 2013

## 31.0%

Firms that had lower revenue in 2014 from 2013

It has allowed us to remain competitive in the projects we pursue," says Tim Chadwick, CEO of MMC Corp.

Owners increasingly are embracing the growing trend of alternate project delivery, integrating subcontractors into the contracting team earlier in the building process. This trend indicates that owners "are recognizing the value of bringing specialty contractors on board early, during preconstruction, so that they can maximize the use of lean methods [such as] BIM-enabled prefabrication and modular building components," says John Cannistraro Jr., president of J.C. Cannistraro LLC.

This trend is no longer limited to a few key specialties. "The mechanical and curtain-wall trades have been part of the coordination process for a long time, but that is now happening in the drywall and ceiling trades," says Chris McPherson, COO of Central Ceilings Inc. He says being at the table together earlier in the process strengthens project teams and relationships, dramatically improving the end product.

This cooperation is an abrupt shift from earlier in the recession, when price was king and contractors scrambled to save money any way they could. "The days of long, drawn-out bidding and re-pricing multiple times—both to the customer and from your vendors—are behind us for now," says Jeffrey Haber, managing partner at W&W Glass LLC. In this new collaborative world, "there is no time to play the old-

**Glazing and Curtain Wall**

**W & W Glass' Art Wall**



W&W Glass LLC (No. 197) won the contract for the West Podium Art Wall for the Shops at Hudson Yards in Manhattan, a 315-ft x 72-ft facade made up of 700 panels of curved printed glass supported by pre-tensioned cables.

style games that we were all subject to during the downturn four to six years ago,” Haber says.

Specialty contractors also are pleased to see that alternate project delivery and early subcontractor involvement are being used in public-works projects. “In the wastewater market, we see a positive trend toward acceptance of alternative procurement methods, rather than the traditional design-bid-build approach,” says Gary McNeil, senior vice president at Prime Controls.

**The Subcontractor as Designer**

The trend toward early contractor involvement has put pressure on subcontractors to fortify their design team to provide effective design-assist capabilities. For example, Limbach Facility Services LLC is making a concerted effort to beef up its engineering staff. “We have dramatically increased the number of engineers hired, so we can do design-assist in-house,” says Charles A. Bacon III, CEO. He says the firm increased the number of engineers on staff 28% last year and is planning to increase it another 35% this year. “Now, our own engineers can answer owners about the most efficient systems for their project,” he says.

Bacon also notes that owners are becoming more proactive in contacting mechanical and electrical contractors directly for consultations on energy efficiency. “We have started getting inquiries directly from owners



**“We have dramatically increased the number of engineers hired, so we can do design-assist in-house. Now, our own engineers can answer owners about the most efficient systems for their project.”**

Charles A. Bacon III, CEO, Limbach Facility Services LLC

to partner up on systems reviews,” he says.

Owner interest in energy-efficient building systems and system rehabilitation has provided new opportunities for many mechanical and electrical contractors. The National Electrical Contractors Association, Bethesda, Md., has developed resources to assist its members in selling to owners. “Many of our members are more used to bidding on projects and are not always comfortable marketing directly to owners, so we are trying to give them the tools they need to succeed in this new market,” says John Grau, NECA’s CEO.

Southland Industries has embraced the move toward providing design services. The company on Oct. 1 announced it was forming a new design subsidiary that would market directly to owners. “Consulting was always a subset of our engineering and service business, so we decided to create a new subsidiary, Enviser, to market consulting directly to owners,” says Ted Lynch, Southland’s CEO. He says Enviser will assist the contracting group but will develop its own customer base, focusing on analytics, building management systems and equipment life-cycle management to optimize building performance for customers’ facilities.

**Not Quite Out of Gas**

The oil-and-gas market is one cause for concern. The sudden drop in oil prices, which started in December 2014, has caused a slowdown in the upstream petroleum market. “We have seen a pullback in both our refinery business and fracking opportunities with the drop in oil and gas prices. Just one year ago, we were making plans to participate in several multibillion-dollar projects. While some may still go forward, this has left a void in one of our target markets for 2015,” says Clayton M. Scharff, CEO of Sachs Electric.

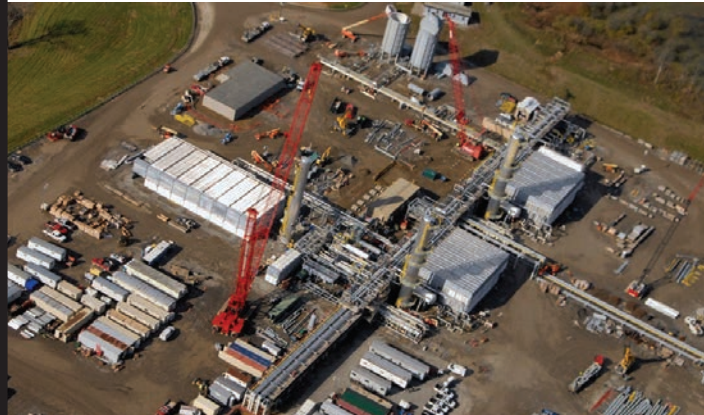
However, many specialty contractors say the midstream and downstream petroleum markets have not been hit so hard. For example, Prime Controls works in the midstream market, “which means that we have not been dramatically affected by the decline in commodity pricing to date,” says McNeil. But he says there could be a potential negative impact on midstream customers if the price of oil remains low.

Petrochemical plant expansions are beginning to move forward after longer-than-expected front-end engineering and planning periods. Many contractors in that market expect a surge in work in the near term. For example, The Brock Group is expecting steep increases in demand for both labor and materials within a short period of time, according to Bob Pragada, Brock’s CEO. Further, he says powerplant combined-cycle conversions are occurring at a faster pace than expected, especially in the northeastern U.S. “We also



## Electrical

## Fractionating Fracked Gas



Sachs Electric (No. 63) did electrical work on the Jewett, Ohio, Hopedale Fractionator plant expansion, to 120,000 barrels of propane and other gases a day. The plant converts gas from the Marcellus and Utica shale plays.

see deferred planned maintenance outages and turn-arounds leading to a significant demand and scheduling challenges in 2016 and 2017,” he says.

Many contractors, especially those running heavy equipment or service fleets, say the drop in oil prices has created savings that go right to the bottom line or offset rising prices in other areas of their business. “Yes, we are seeing some savings in lower fuel prices, but all it takes is the cancellation of one major petroleum project to turn lower oil prices into a net negative for us,” says Guzzi.

### Unpredictable Cost Issues

Generally, materials and equipment prices have risen at acceptable levels, given the increase in demand. But some contractors are facing unpredictable cost escalations. “We are experiencing double-digit increases in cement. Other equipment and materials are increasing in the high single digits, and tower cranes are becoming very difficult to source and obtain,” says Don Dreier, executive vice president of Donley’s Inc.

D. Thomas Ruttura, president of Ruttura & Sons Construction, says the recent consolidation of the ready-mix industry may be part of the reason for increased concrete prices. He cites as an example Euleess, Texas-based U.S. Concrete Inc.’s acquisition of New York City-based Ferrara Bros. Building Materials Corp. U.S. Concrete has acquired seven local materials companies so far this year. Ruttura says this type of consolidation will increase prices and decrease service. When a conglomerate buys a local business, that business’ profits will no longer be



“Consulting was always a subset of our engineering and service business, so we decided to create a new subsidiary, Enviser, to market consulting directly to owners.”

Ted Lynch, CEO,  
Southland  
Industries

spent in the local economy, he observes.

The other side of the coin is the impact of a faltering Chinese economy on commodity prices. Many firms say that a drop in demand from Chinese industry for raw materials has helped ease inflationary pressures. “China has changed the game on materials. No longer is copper priced like gold,” says James F. Reiss, CEO, Westside Mechanical Group.

But this drop in Chinese demand for materials has hurt demolition contractors, as the price of scrap has fallen. “Over the past year, the salvage market has gone down about 60% to date. This downturn is due to the strong dollar ... and other economic uneasiness overseas,” says Chris Berardi, president of JDC Demolition Co. “Hands down, the biggest challenges we’re going to face in the coming months are related to the sudden and dramatic drop in the commodities market,” adds David Griffin Jr., president of D.H. Griffin Wrecking Co.

For asbestos-abatement contractors, another trend has meant a surge in their business: The conversion of older buildings to residential. “Asbestos has been used in building materials for hundreds of years, but [it was] banned 35 years ago, so there’s a lot of abatement to be completed. Also, a strong economy generates redevelopment, which, in turn, creates high demand for asbestos abatement,” says Ron Daniel, CEO of ARC Abatement.

### Staff Shortages Starting To Appear

The one issue that has most specialty contractors on edge is the prospect of shortages in the field and in the office. Many firms say they have not yet been hit with staffing shortages but think it is only a matter of time.

The scale of the problem is not yet known, but many firms already are taking action. For example, Safway Group Holding expects the Gulf Coast market to begin ramping up again. So, it is seeking all levels of personnel in scaffolding, insulation, fireproofing and coatings and, in the coming months, is looking to hire between 3,000 and 7,000 people in the Gulf region alone. “Recently, we opened a new state-of-the-art-hiring center in Houston to help us achieve our objectives,” says Hayes of Safway. “By offering top pay, training and benefits, we hope to attract and maintain the best customer-centric team in the market.”

The field-worker shortages already have had an impact on many firms. “Our pursuit of new project opportunities has been altered by these shortages, and, in some cases, we have decided not to pursue a project due to concerns we may not be able to provide sufficient field labor,” says Chadwick of MMC Corp.

Potential worker shortages and wage escalation have many contractors worried about how to price a job. For

MMC CONTRACTORS won the mechanical contract on a 650,000-sq-ft hospital for the Medical University of South Carolina, in Charleston.

example, John Boncher, CEO of Cupertino Electric, notes that the hot California construction market is nearing full employment. “A booming market means that the electrical projects being bid today will be built with electricians transplanted from other locations,” he says. “Some competitor bids that we’re seeing have surprisingly tight numbers, which is risky, considering the future labor pool is unknown. We are actively pursuing new projects but are focused on making sure that we are properly factoring risk into our bids for future work.”

Many contractors worry that a severe skills shortage will result in contractors raiding each other’s workforces. “There will always be people who will be ready to move to another firm for an extra 20%, but, more often than not, they end up regretting it,” says Guzzi of EMCOR. “There is always a home at EMCOR for great people. You have to treat people well in the bad times as well as the good times, and that is how we operate,” he says.

“We can’t treat [staffing] issues like a zero-sum game,” says Jeff VanderLaan, CEO at Kent Cos. “The labor wars used to be about pay rates, benefits and recruiting from competitors across the street. Today, it’s about building the next generation of talent.”



**“Union wages are going up, but the increases are not exorbitant. Unions understand there is pressure on union contractors to be competitive.”**

John Grau, CEO, National Electrical Contractors Association

Some firms have tried interesting recruiting methods. For example, Long Painting Co. hired a former Army captain to head up its recruiting effort, targeting veterans. “With the military reduction, we have found a source of higher-caliber individuals that are disciplined, motivated and eager to learn a new trade,” says Jeff Engle, Long’s business development manager.

The increase in demand for craft workers has had an effect on wages. “Labor cost is increasing—and rightfully so. All of our crews have worked hard since the recession, and they deserve the increases they have received. Fortunately, the market is allowing us to increase our billing rates accordingly,” says Christopher Jordan, president of Johnson and Jordan.

On the labor side, unions are expecting good contracts for their members after years of concessions, and many contractors say unions are being reasonable. “Union wages are going up, but the increases are not exorbitant. Unions understand there is pressure on union contractors to be competitive,” says Grau of NECA. He says NECA and the International Brotherhood of Electrical Workers have a joint arbitration-mediation panel to help resolve contract negotiation

**THE TOP 50 FIRMS IN ELECTRICAL**

RANK 2015	RANK 2014	FIRM	(\$ MIL.) 2014 REV.	% CHANGE '13-'14	RANK 2015	RANK 2014	FIRM	(\$ MIL.) 2014 REV.	% CHANGE '13-'14
1	1	QUANTA SERVICES INC.	5,299.1	+18	26	24	MOTOR CITY ELECTRIC CO.	260.5	-5
2	2	EMCOR GROUP INC.	2,409.4	-6	27	32	PARSONS ELECTRIC	254.2	+27
3	5	ROSENDIN ELECTRIC	1,026.6	+28	28	30	ARDENT SERVICES LLC	253.4	+16
4	4	MYR GROUP INC.	944.0	+5	29	33	HATZEL & BUEHLER INC.	242.6	+23
5	3	MMR GROUP	816.0	-14	30	36	NEW RIVER ELECTRICAL CORP.	242.5	+35
6	7	CUPERTINO ELECTRIC	769.6	+10	31	20	CACHE VALLEY ELECTRIC CO.	240.2	-26
7	6	M.C. DEAN INC.	620.2	-13	32	**	POWER DESIGN INC.	237.4	NA
8	8	MASTEC INC.	599.5	+7	33	29	DAVIS H. ELLIOT CO. INC.	231.7	+6
9	9	MDU CONSTRUCTION SERVICES GROUP INC.	593.4	+6	34	31	MILLER ELECTRIC CO.	216.2	+6
10	**	FIVE STAR ELECTRIC CORP.	544.8	NA	35	44	SPRIG ELECTRIC	205.0	+40
11	11	BERGELECTRIC CORP.	494.1	-6	36	34	WALKER ENGINEERING INC.	201.8	+4
12	16	THE NEWTRON GROUP LLC	435.0	+19	37	37	COCHRAN INC.	186.5	+6
13	13	ALDRIDGE ELECTRIC	404.0	-2	38	39	GAYLOR ELECTRIC INC.	173.1	+0
14	14	ENERGY SERVICES HOLDINGS LLC	396.4	+6	39	47	INGLETT & STUBBS LLC	163.1	+20
15	18	HELIX ELECTRIC	379.0	+8	40	**	CLEVELAND ELECTRIC CO.	153.9	+23
16	17	FAITH TECHNOLOGIES INC.	376.0	+6	41	45	MILLER ELECTRIC CO.	150.7	+4
17	19	E-J ELECTRIC INSTALLATION CO.	332.0	+0	42	48	ROGERS ELECTRIC	148.2	+13
18	21	FISK ELECTRIC CO.	326.9	+5	43	49	JMEG LP	145.9	+14
19	15	MORROW-MEADOWS CORP.	326.5	-11	44	**	YTG LLC	145.2	+13
20	**	REDWOOD ELECTRIC GROUP INC.	320.0	NA	45	50	TRI-CITY ELECTRICAL CONTRACTORS INC.	142.7	+12
21	26	CONTI CORP.	303.6	+20	46	**	MCKINSTRY	140.0	+31
22	27	ALLISON-SMITH CO. LLC	299.0	+22	47	**	TRI CITY ELECTRIC CO. OF IOWA	138.7	+38
23	28	HUNT ELECTRIC CORP.	295.3	+26	48	46	THE STATE GROUP INC.	135.0	-3
24	22	WAYNE J. GRIFFIN ELECTRIC INC.	293.1	+1	49	43	CSI ELECTRICAL CONTRACTORS INC.	134.6	-8
25	25	SACHS ELECTRIC CO.	271.4	+0	50	**	O'CONNELL ELECTRIC CO. INC.	129.5	+7

NA=NOT AVAILABLE. \*\* =NOT PREVIOUSLY RANKED.



disputes. "This year, the panel has seen the fewest disputes in 50 years," Grau says.

Grau notes that the workforce shortage has shrunk the disparity in wages between union and non-union workers, taking away much of owners' incentives to favor non-union contractors. A recent wage survey showed non-union wages in the crafts increased 6.4% since mid-2014 (ENR 10/12 p. 20).

Despite the shrinking divide between the costs of union and non-union workers, many union contractors are annoyed about the perceptions among some owners that going non-union will save them money. For example, many of the developer-driven projects in New York City, traditionally a union stronghold, now are going to non-union firms.

But this trend is not limited to New York. In Washington state, "we are seeing non-union subcontractors on larger tower projects that were predominately handled by union subcontractors in the past. Price has been the driving factor for general contractors making this shift," says Engle of Long Painting.

Rutturo says this trend may not make long-term economic sense. He says developers want non-union



**"Efficiency gains, schedule gains and productivity gains promised by the use of BIM are finally being realized through prefabrication and modular construction."**

Dan Briscoe, Vice President, Apollo Mechanical

contractors, not realizing that the people who will be able to afford to shop in their malls or live in their apartment buildings are middle class. "Union people are America's middle class." Developers will defeat their own purpose by trying to go with non-union contractors, he says.

**Technology No Longer a Separator**

Technology, such as the use of building-information-modeling software, used to be a differentiator. Now, tech know-how is a necessity for subcontractors, and its use is beginning to pay off. "We are finally starting to see where efficiency gains, schedule gains and productivity gains promised by the use of BIM are finally being realized through prefabrication and modular construction. This may be the first real increase in productivity in our industry in several decades," says Dan Briscoe, vice president, Apollo Mechanical.

The growing use of BIM has allowed specialty contractors to develop products that may not have been possible in the pre-BIM days. For example, Finfrook Industries spent the past 10 years developing its DualDeck Building System, which incorporates MEP and fire-protection subsystems

**THE TOP 50 FIRMS IN MECHANICAL**

RANK 2015	RANK 2014	FIRM	(\$ MIL.) 2014 REV.	% CHANGE '13-'14	RANK 2015	RANK 2014	FIRM	(\$ MIL.) 2014 REV.	% CHANGE '13-'14
1	1	EMCOR GROUP INC.	3,630.1	-6	26	27	P1 GROUP INC.	151.8	+4
2	2	COMFORT SYSTEMS USA INC.	1,156.9	+3	27	31	THE COASTAL GROUP	147.2	+14
3	3	ACCO ENGINEERED SYSTEMS	720.0	+2	28	39	E M DUGGAN INC.	145.8	+31
4	6	SOUTHLAND INDUSTRIES	517.9	+21	29	30	IVEY MECHANICAL CO.	142.8	+7
5	5	TDINDUSTRIES	433.0	+0	30	32	SAUER HOLDINGS INC.	140.3	+8
6	7	MCKINSTRY	420.0	-2	31	25	THE HILL GROUP	139.0	-8
7	11	NOOTER CONSTRUCTION CO.	400.4	+45	32	50	MECHANICAL INC.	138.4	+56
8	8	HARDER MECHANICAL CONTRACTORS INC.	375.9	-2	33	35	SHAFT DRILLERS INTERNATIONAL LLC	138.4	+12
9	13	JH KELLY	355.0	+43	34	45	CECO CONSTRUCTION GROUP	137.8	+34
10	**	WDF INC.	317.1	NA	35	40	WORTH & CO. INC.	137.2	+25
11	14	THE BRANDT COS.	306.4	+24	36	48	A.O. REED & CO	135.0	+41
12	9	LIMBACH FACILITY SERVICES	279.7	-12	37	33	LEE CO.	129.7	+0
13	**	TEAM INDUSTRIAL SERVICES INC.	277.3	NA	38	47	SHAPIRO & DUNCAN INC.	115.0	+18
14	12	MCKENNEY'S INC.	275.1	+3	39	41	J. F. AHERN CO.	114.9	+7
15	22	APOLLO MECHANICAL CONTRACTORS	273.0	+62	40	43	FRESH MEADOW MECHANICAL CORP.	110.6	+5
16	16	TERRA MILLENNIUM CORP.	272.2	+17	41	26	AZCO INC.	110.0	-25
17	21	MMC CONTRACTORS INC.	257.6	+44	42	38	LETSOS CO.	106.1	-6
18	10	U.S. ENGINEERING CO.	252.0	-17	43	**	HERMANSON CO.	101.1	+26
19	18	CRITCHFIELD MECHANICAL INC.	239.3	+11	44	44	PACIFIC RIM MECHANICAL CONTRACTORS INC.	100.0	-3
20	28	HARRIS COS.	233.0	+69	45	49	GRUNAU CO.	96.5	+1
21	19	MURPHY CO. MECHANICAL CONTR'S & ENGINEERS	217.5	+9	46	**	THE BP GROUP	95.7	+10
22	17	MURRAY CO.	190.0	-15	47	**	ERMCO INC.	93.9	NA
23	24	JOHN E. GREEN CO.	189.0	+23	48	46	THE STATE GROUP INC.	93.0	-9
24	23	MCCARL'S INC.	183.0	+10	49	**	KSW MECHANICAL SERVICES INC.	93.0	+43
25	29	J.C. CANNISTRARO LLC	156.0	+15	50	**	DORVIN D. LEIS CO. INC.	88.8	+10

NA=NOT AVAILABLE. \*\* =NOT PREVIOUSLY RANKED.

### THE TOP 20 FIRMS IN MASONRY

RANK	RANK	FIRM	(\$ MIL.)	% CHANGE
2015	2014		2014 REV.	'13-'14
1	2	MC GEE BROTHERS CO. INC.	83.6	+14
2	1	WESTERN CONSTRUCTION GROUP	65.3	-16
3	4	SUN VALLEY MASONRY INC.	43.6	+21
4	5	NORTHLAND CONCRETE & MASONRY CO. LLC	37.5	+51
5	6	DEE BROWN INC.	34.4	+43
6	3	C.A. LINDMAN COS.	30.0	-25
7	10	IMS MASONRY INC.	23.7	+17
8	9	FERNANDES MASONRY INC.	21.7	+3
9	7	JOHN SMITH MASONRY	21.0	-9
10	8	PYRAMID MASONRY CONTRACTORS INC.	19.9	-9
11	**	OTTO BAUM CO. INC.	19.8	NA
12	**	BIGGE CRANE & RIGGING CO.	19.1	NA
13	14	THE WITMER GROUP	16.6	+8
14	11	BRODIE CONTRACTORS INC.	16.2	-11
15	12	MASONRY BUILDERS INC.	16.1	+3
16	13	SHADROCK AND WILLIAMS MASONRY LTD.	14.9	-3
17	15	INTERNATIONAL CHIMNEY CORP.	12.1	+10
18	**	CB STRUCTURES INC.	10.5	NA
19	**	RD MASONRY INC.	7.5	NA
20	**	ASSOCIATED CONSTRUCTION & ENGINEERING INC.	7.1	NA

NA=NOT AVAILABLE. \*\* =NOT PREVIOUSLY RANKED.

### THE TOP 20 FIRMS IN CONCRETE

RANK	RANK	FIRM	(\$ MIL.)	% CHANGE
2015	2014		2014 REV.	'13-'14
1	1	BAKER CONCRETE CONSTRUCTION INC.	725.0	-14
2	6	BRAND ENERGY & INFRASTRUCTURE SERVICES INC.	719.4	+286
3	2	STRUCTURAL GROUP	381.0	+12
4	3	CECO CONSTRUCTION GROUP	373.2	+26
5	**	TINDALL CORP.	241.8	NA
6	5	T.A.S. COMMERCIAL CONCRETE CONSTRUCTION LLC	236.2	+21
7	4	LARGO CONCRETE INC.	216.7	+3
8	10	SUNTEC CONCRETE	185.3	+57
9	**	MANAFORT BROTHERS INC.	178.1	NA
10	7	CAPFORM INC.	175.9	+24
11	9	S & F CONCRETE CONTRACTORS INC.	169.8	+38
12	**	OSBURN CONTRACTORS INC.	155.0	NA
13	8	GATE PRECAST CO.	147.3	+11
14	**	JOSEPH J. ALBANESE INC.	135.5	NA
15	13	KENT COS.	132.5	+61
16	**	BOMEL CONSTRUCTION CO. INC.	124.0	NA
17	12	CONCRETE STRATEGIES LLC	110.4	+32
18	18	MCHUGH CONCRETE CONSTRUCTION	105.3	+75
19	**	PACIFIC STRUCTURES INC.	102.3	NA
20	**	T.B. PENICK & SONS INC.	94.7	NA

NA=NOT AVAILABLE. \*\* =NOT PREVIOUSLY RANKED.

### THE TOP 20 FIRMS IN WALL AND CEILING

RANK	RANK	FIRM	(\$ MIL.)	% CHANGE
2015	2014		2014 REV.	'13-'14
1	1	PERFORMANCE CONTRACTING GROUP INC.	571.1	+6
2	2	KHS&S CONTRACTORS	254.2	-10
3	5	PRECISION WALLS	169.2	+29
4	4	THE RAYMOND GROUP	145.6	+10
5	7	ACOUSTI ENGINEERING CO. OF FLORIDA	137.5	+12
6	6	BAKER TRIANGLE	132.6	+5
7	3	STANDARD DRYWALL INC.	121.6	-22
8	8	CALIFORNIA DRYWALL	109.4	-1
9	9	NATIONAL CONSTRUCTION ENTERPRISES INC.	104.1	+13
10	10	F L CRANE & SONS	89.4	+15
11	**	MIDWEST DRYWALL CO. INC.	68.1	NA
12	13	GROUP BUILDERS INC.	66.6	+38
13	12	BAYSIDE INTERIORS INC.	65.5	+32
14	11	NEVELL GROUP INC.	63.1	+15
15	14	DALEY'S DRYWALL & TAPING INC.	54.5	+14
16	15	CENTRAL CEILINGS INC.	41.9	+19
17	18	TJ WIES CONTRACTING INC.	41.5	+41
18	20	ACOUSTIC CEILING AND PARTITION CO.	37.2	+36
19	**	TRINITY DRYWALL & PLASTERING SYSTEMS	33.6	+44
20	**	SPACECON SPECIALTY CONTRACTORS LLC	32.2	+87

NA=NOT AVAILABLE. \*\* =NOT PREVIOUSLY RANKED.

### THE TOP 20 FIRMS IN UTILITY

RANK	RANK	FIRM	(\$ MIL.)	% CHANGE
2015	2014		2014 REV.	'13-'14
1	1	QUANTA SERVICES INC.	2,448.1	+31
2	2	MASTEC INC.	1,614.1	+4
3	3	HENKELS & MCCOY INC.	1,042.5	-19
4	5	TEAM FISHEL	311.4	+11
5	6	MDU CONSTRUCTION SERVICES GROUP INC.	291.1	+8
6	7	INTREN INC.	247.4	+20
7	**	BOND BROTHERS	157.0	NA
8	9	W.A. RASIC CONSTRUCTION CO. INC.	111.0	-3
9	12	W.A. CHESTER LLC	107.7	+31
10	10	WEST VALLEY CONSTRUCTION CO. INC.	96.0	+4
11	15	NETWORK INFRASTRUCTURE INC.	82.1	+65
12	13	ALEX E. PARIS CONTRACTING CO. INC.	68.0	-15
13	**	RMCI INC.	57.3	NA
14	16	GAINES AND CO.	50.5	+17
15	**	VAUGHN INDUSTRIES LLC	43.1	NA
16	20	VEIT & CO. INC.	32.8	+13
17	**	JOSLIN CONSTRUCTION	29.2	+45
18	**	CENTERLINE UTILITIES INC.	29.2	+25
19	**	ELLINGSON LLC	28.5	NA
20	18	B. FRANK JOY	28.2	-14

NA=NOT AVAILABLE. \*\* =NOT PREVIOUSLY RANKED.

D. H. GRIFFIN WRECKING CO. is working with Kiewit on the I-40 "Fast Fix 8" in Nashville to replace eight bridges over 13 weekends.

## THE TOP 20 FIRMS IN DEMOLITION AND WRECKING

RANK	RANK	FIRM	(\$ MIL.)	% CHANGE
2015	2014		2014 REV.	'13-'14
1	1	NORTHSTAR GROUP SERVICES INC.	286.2	+2
2	3	BRANDENBURG INDUSTRIAL SERVICE CO.	212.8	+10
3	2	PENHALL CO.	174.3	-15
4	4	D. H. GRIFFIN WRECKING CO. INC.	153.0	+1
5	5	MCM MANAGEMENT CORP.	115.0	+24
6	6	BIERLEIN COS.	79.1	-5
7	8	INDEPENDENCE EXCAVATING INC.	67.7	+35
8	14	JDC DEMOLITION INC.	57.0	+137
9	10	NORTH AMERICAN DISMANTLING CORP.	34.2	+14
10	9	ERSI	33.8	-23
11	12	MANAFORT BROTHERS INC.	31.4	+11
12	11	O'ROURKE WRECKING CO.	30.6	+5
13	13	MIDWEST STEEL CO. INC.	29.1	+8
14	15	CHERRY COS.	28.0	+18
15	16	VEIT & CO. INC.	26.2	+11
16	**	LOUISIANA CHEMICAL DISMANTLING CO.	22.9	+28
17	19	BREAK THRU ENTERPRISES INC.	22.7	+9
18	**	ENVIROCON	21.6	NA
19	**	JOSEPH J. ALBANESE INC.	20.8	NA
20	20	ROBINETTE DEMOLITION INC.	20.7	+0

NA=NOT AVAILABLE. \*\*=NOT PREVIOUSLY RANKED.

## THE TOP 20 FIRMS IN ASBESTOS ABATEMENT

RANK	RANK	FIRM	(\$ MIL.)	% CHANGE
2015	2014		2014 REV.	'13-'14
1	1	NORTHSTAR GROUP SERVICES INC.	250.4	+7
2	**	PAL ENVIRONMENTAL SERVICES	100.1	NA
3	4	PERFORMANCE CONTRACTING GROUP INC.	49.2	+30
4	3	IREX CORP.	41.9	+9
5	5	PRECISION ENVIRONMENTAL CO.	38.1	+8
6	10	ARC ABATEMENT	35.2	+79
7	2	THE BROCK GROUP	29.0	-33
8	9	PRISM RESPONSE INC.	25.1	+18
9	12	DEMOLITION & ASBESTOS REMOVAL INC.	21.9	+26
10	8	MIDWEST SERVICE GROUP	17.5	-20
11	15	AMERICAN TECHNOLOGIES INC.	16.7	+13
12	16	ENVIRONMENTAL ASSURANCE CO. INC.	16.5	+14
13	11	WINTER ENVIRONMENTAL	15.5	-11
14	13	EARTH SERVICES & ABATEMENT (ESA) INC.	15.0	-12
15	7	ENVIRONMENTAL HOLDINGS GROUP LLC	13.0	-41
16	20	NEWROADS ENVIRONMENTAL SERVICES	12.5	+83
17	17	AAC CONTRACTING INC.	12.0	-10
18	18	SPRAY SYSTEMS ENVIRONMENTAL	11.5	+15
19	**	HEPACO LLC	7.1	+16
20	**	INSULATION SPECIALTIES INC.	6.9	+2

NA=NOT AVAILABLE. \*\*=NOT PREVIOUSLY RANKED.

## THE TOP 20 FIRMS IN SHEET METAL

RANK	RANK	FIRM	(\$ MIL.)	% CHANGE
2015	2014		2014 REV.	'13-'14
1	2	THE HILL GROUP	113.5	+41
2	3	CROWN CORR INC.	65.8	+5
3	14	SUPERIOR AIR HANDLING	64.2	+88
4	6	A.C. DELLOVADE INC.	52.3	+16
5	5	POYNTER SHEET METAL	47.9	-12
6	9	B. T. MANCINI CO. INC.	44.7	+14
7	13	DEE CRAMER INC.	36.1	+3
8	11	MECHANICAL INC.	34.6	-9
9	15	BAKER GROUP	34.5	+12
10	16	J. F. AHERN CO.	26.3	+9
11	7	MMC CONTRACTORS INC.	22.4	-50
12	**	DOUGLASS COLONY GROUP	20.1	+81
13	**	BIGGE CRANE & RIGGING CO.	19.1	NA
14	**	CHARLES E. JARRELL CONTRACTING INC.	18.8	+232
15	**	FLYNN	18.3	NA
16	**	P1 GROUP INC.	17.6	+24
17	**	THE COASTAL GROUP	14.8	+18
18	**	KOVACH BUILDING ENCLOSURES	14.2	NA
19	**	NASHVILLE MACHINE CO. INC.	13.7	NA
20	**	HOLLAND ROOFING	13.6	+31

NA=NOT AVAILABLE. \*\*=NOT PREVIOUSLY RANKED.

## THE TOP 20 FIRMS IN STEEL ERECTION

RANK	RANK	FIRM	(\$ MIL.)	% CHANGE
2015	2014		2014 REV.	'13-'14
1	1	SCHUFF INTERNATIONAL	526.0	+26
2	2	MIDWEST STEEL INC.	143.2	+19
3	6	NATIONAL STEEL CITY LLC	97.7	+66
4	7	THE WILLIAMS GROUP	93.1	+64
5	9	BUCKNER LLC	79.7	+69
6	5	BASDEN STEEL CORP.	75.0	+18
7	4	SURE STEEL INC.	68.9	-5
8	8	SME STEEL	55.1	+2
9	3	LPR CONSTRUCTION	46.4	-56
10	**	AREA ERECTORS INC.	41.9	+147
11	16	DANNY'S CONSTRUCTION CO. LLC	40.3	+55
12	**	BIGGE CRANE & RIGGING CO.	38.2	NA
13	12	UNISTRUT CONSTRUCTION	37.1	+9
14	14	PITTSBURG TANK AND TOWER GROUP INC.	34.9	+17
15	15	SOWLES CO.	33.9	+15
16	18	ASSOCIATED CONSTRUCTION & ENGINEERING INC.	33.5	+31
17	13	SUPERIOR RIGGING & ERECTING CO. INC.	31.6	+1
18	17	CSE INC.	29.5	+15
19	10	CENTURY STEEL ERECTORS CO. LP	27.4	-23
20	19	CASEY INDUSTRIAL	26.3	+3

NA=NOT AVAILABLE. \*\*=NOT PREVIOUSLY RANKED.

**KENT COS.** is doing the complete concrete package for the 361,000-sq-ft Tanger Outlet Mall, Grand Rapids, Mich.

## THE TOP 20 FIRMS IN FIRE PROTECTION AND SPRINKLERS

RANK 2015	RANK 2014*	FIRM	(\$ MIL.) 2014 REV.	% CHANGE '13-'14*
1	**	EMCOR GROUP INC.	385.5	NA
2	2	VSC FIRE & SECURITY INC.	122.2	+17
3	3	J. F. AHERN CO.	98.1	+12
4	5	WAYNE AUTOMATIC FIRE SPRINKLERS INC.	71.8	+18
5	6	J.C. CANNISTRARO LLC	27.5	+15
6	**	MDU CONSTRUCTION SERVICES GROUP INC.	22.4	NA
7	8	JOHN E. GREEN CO.	21.0	+23
8	**	WDF INC.	20.2	NA
9	9	HAMPSHIRE FIRE PROTECTION CO.	17.5	+9
10	12	APS FIRE	15.7	+17
11	7	ARDEN BUILDING COS. LLC	12.6	-30
12	13	AMERICAN FIRE TECHNOLOGIES LLC	11.5	-8
13	11	GREAT LAKES PLUMBING & HEATING CO.	10.6	-21
14	**	THE PIPCO COS. LTD.	8.1	NA
15	18	WYATT INC.	7.2	+12
16	**	ENTERPRISE ELECTRIC LLC	4.1	NA
17	**	CASEY INDUSTRIAL	3.8	NA
18	19	CONTI CORP.	3.3	-41
19	**	NOVA HOTEL RENOVATION & CONSTRUCTION LLC	3.2	NA
20	**	KPOST CO.	3.2	NA

\* NA=NOT AVAILABLE. \*\* =NOT PREVIOUSLY RANKED.

### Asbestos Abatement

## Who Abated J.R.?



ARC Abatement (**No. 417**) is doing one of the largest U.S. asbestos-abatement jobs: the 52-floor, 1.3-million-sq-ft 1401 Elm St. building in Dallas—50th-floor boiler room, pictured—once used as the fictional office of J.R. Ewing in the 1980s TV show “Dallas.”

into the precast- and prestressed-concrete product during manufacturing. “Computer-aided manufacturing, driven by 3D modeling, ensures dimensional accuracy in the product and exceptional speed during on-site installation,” says Allen Finrock, CEO.

However, advancing technology does have its price. “It is getting harder to fix mechanical equipment due to [its] complexity. A service technician can no longer go to a jobsite without a laptop. Training is imperative, and the company must shoulder 100% of this training as the trades are unable to keep up with the fast pace of technological advances,”

says Reiss of Westside Mechanical Group.

Also, some contractors worry that the sheer volume of information and time pressures for quick turnarounds may take its toll. While technology has drastically increased the volume of information available, people still have to understand the project the way they used to “back in the blueprint-sepia-pager-courier days,” says Michael Perle, owner of Perlectric. He worries that trying to keep up with the demands of new technology will create psychological pressures and interfere with employee job satisfaction. ■

## How To Read the Tables

### KEY TO TYPE OF FIRM

**A**=asbestos abatement; **C**=concrete; **D**=demolition/wrecking; **E**=electrical; **F**=fire protection and sprinklers; **G**=glazing/curtain wall; **M**=mechanical; **MA**=masonry; **O**=other; **P**=painting; **R**=roofing; **SH**=sheet metal; **ST**=steel erection; **U**=utility; **W**=wall/ceiling; **X**=excavation/foundation.

**Companies** are ranked according to construction revenue in 2014 in (\$) millions from specialty contracting in a prime or subcontracting capacity. Firms

that were not ranked in 2014 are designated by double asterisks (\*\*). New contract awards refer to contracts awarded in 2014. NA=not available.

**General Building** as a category includes commercial buildings, offices, stores, educational facilities, government buildings, hospitals, medical facilities, hotels, apartments, housing, etc.

**Hazardous Waste** includes chemical and nuclear waste treatment, asbestos and lead abatement, etc.

**Industrial Process** includes pulp and paper mills, steel mills, nonferrous metal refineries, pharmaceutical plants, chemical plants, food and other processing plants, etc.

**Manufacturing** includes auto, electronic assembly, textile plants, etc.

**Petroleum** includes refineries, petrochemical plants, offshore facilities, pipelines, etc.

**Power** includes thermal and hydroelectric powerplants, waste-to-energy plants, transmission lines, substations, cogeneration plants, etc.

**Sewerage / Solid Waste** includes

sanitary and storm sewers, treatment plants, pumping plants, incinerators, industrial waste facilities, etc.

**Telecommunications** includes transmission lines and cabling, towers and antennae, data centers, etc.

**Transportation** includes airports, bridges, roads, canals, locks, dredging, marine facilities, piers, railroads, tunnels, etc.

**Water Supply** includes dams, reservoirs, transmission pipelines, distribution mains, irrigation canals, desalination and potability treatment plants, pumping stations, etc.

PHOTO COURTESY OF ARC ABATEMENT